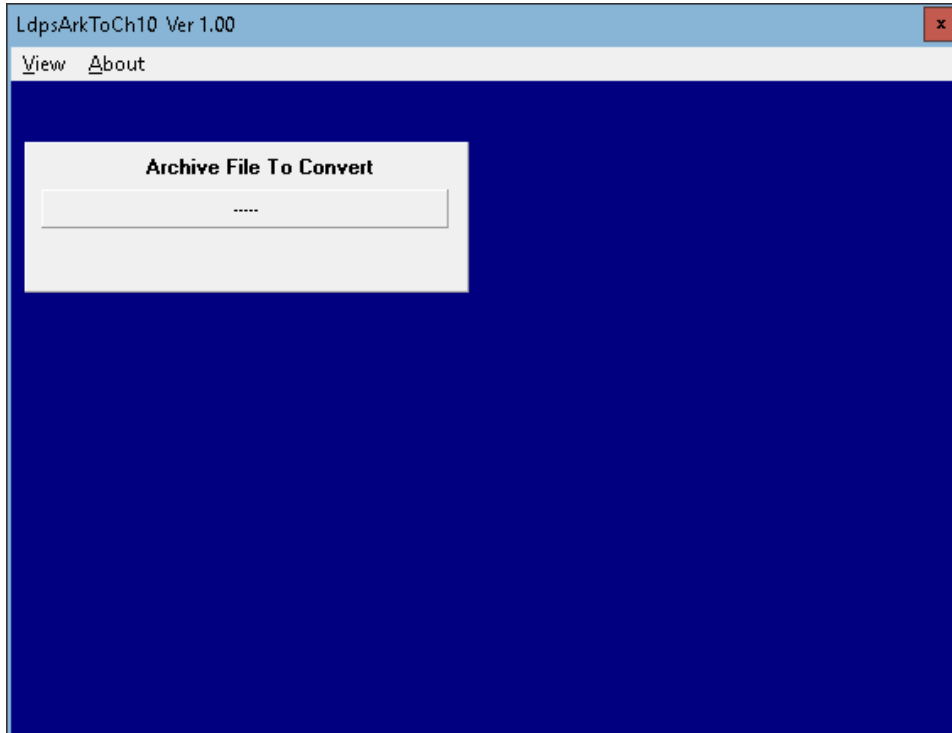


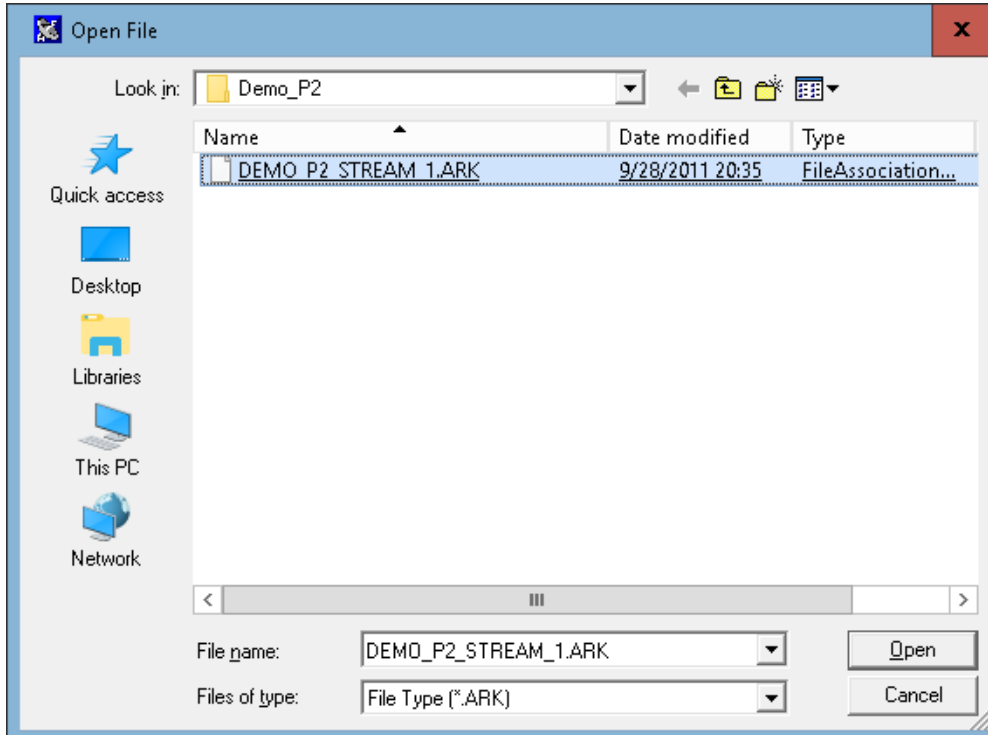
# Using the ArkToCh10Converter.exe Tool

Launch the **ArkToCh10Converter.exe** Tool:

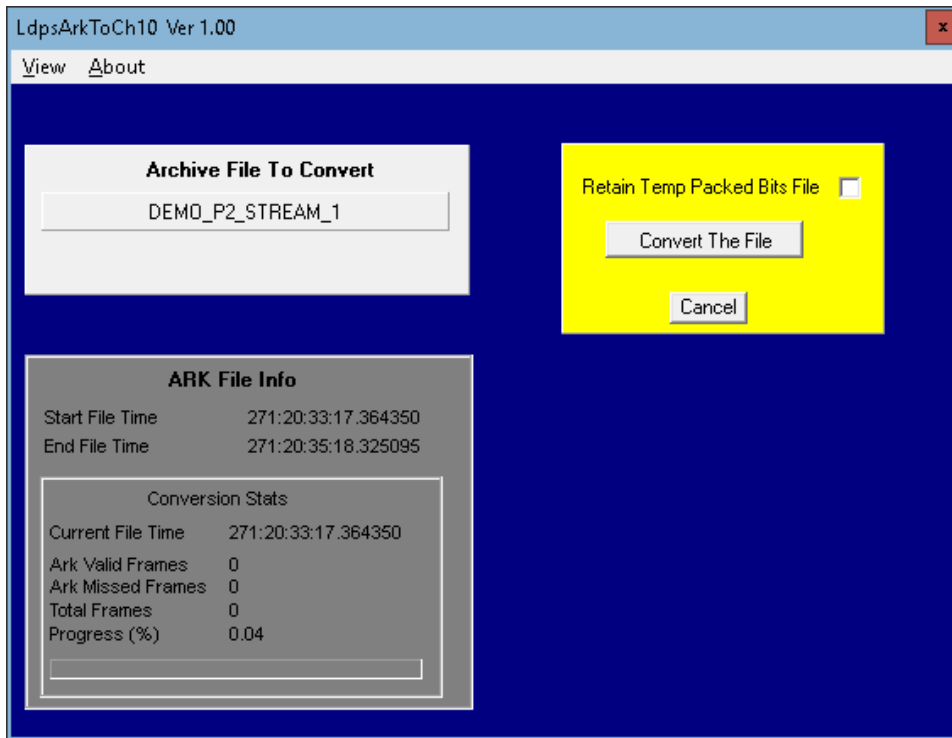


Click the **Archive to Convert** button

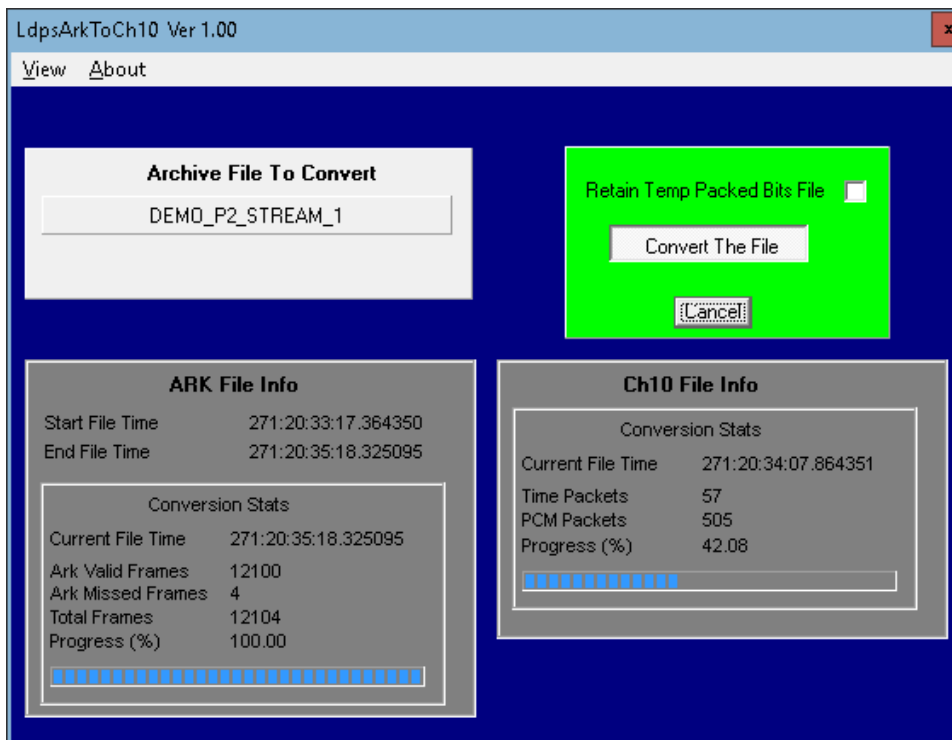
Steer to the **.ARK** file of interest:



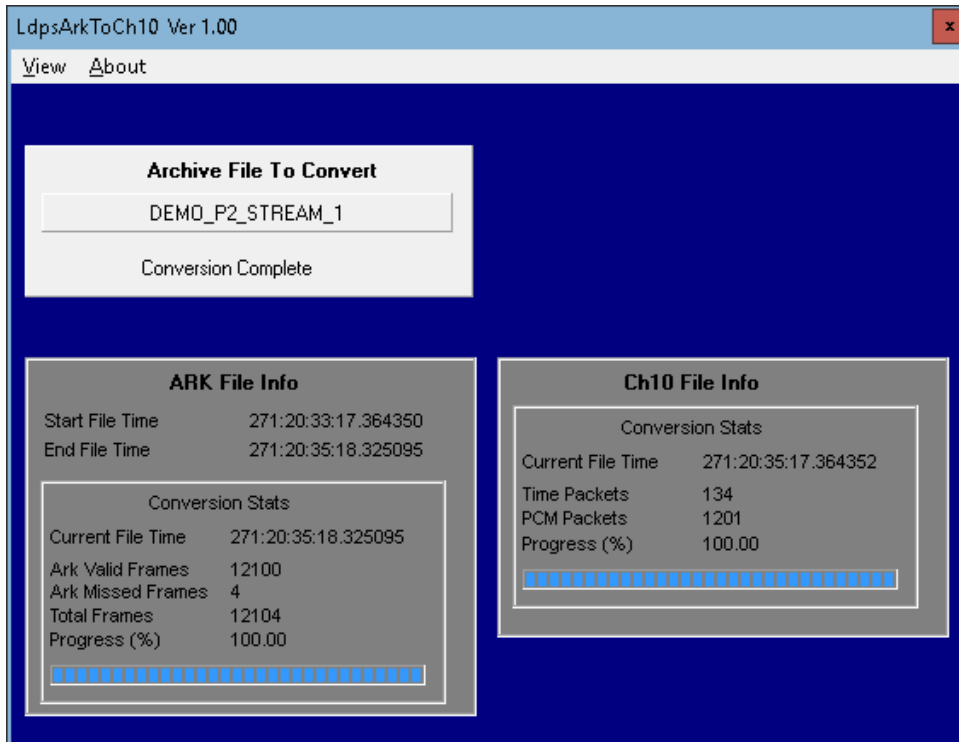
Click **Open**



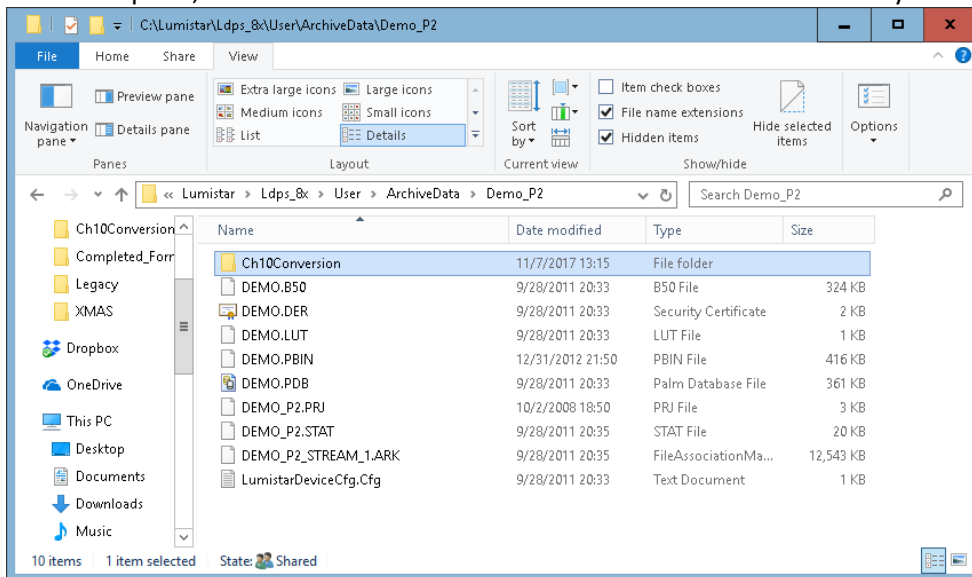
Click the **Convert The Tile** button:



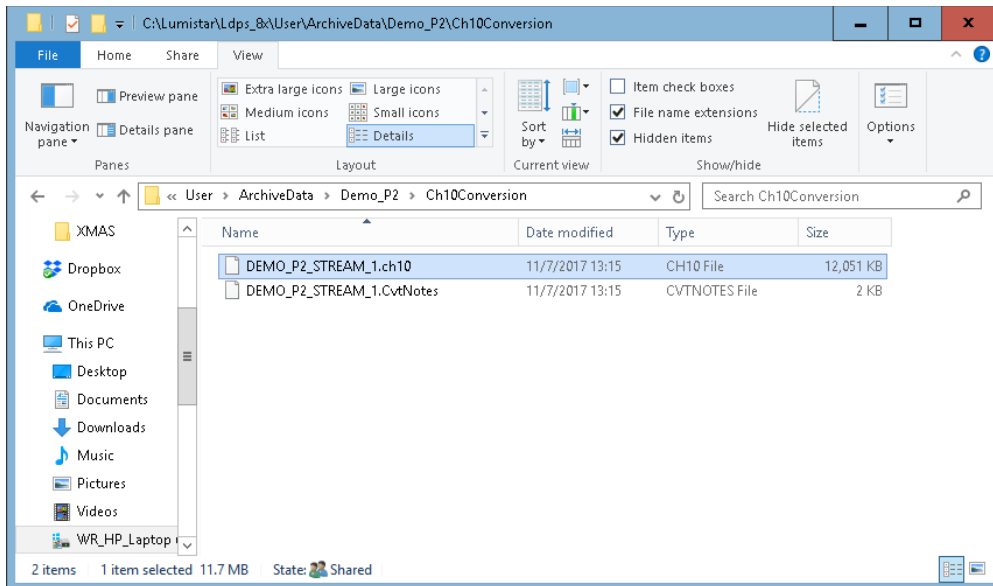
Finished



When complete, the Tool adds a **Ch10Conversion** folder in the .ARK folder you selected:

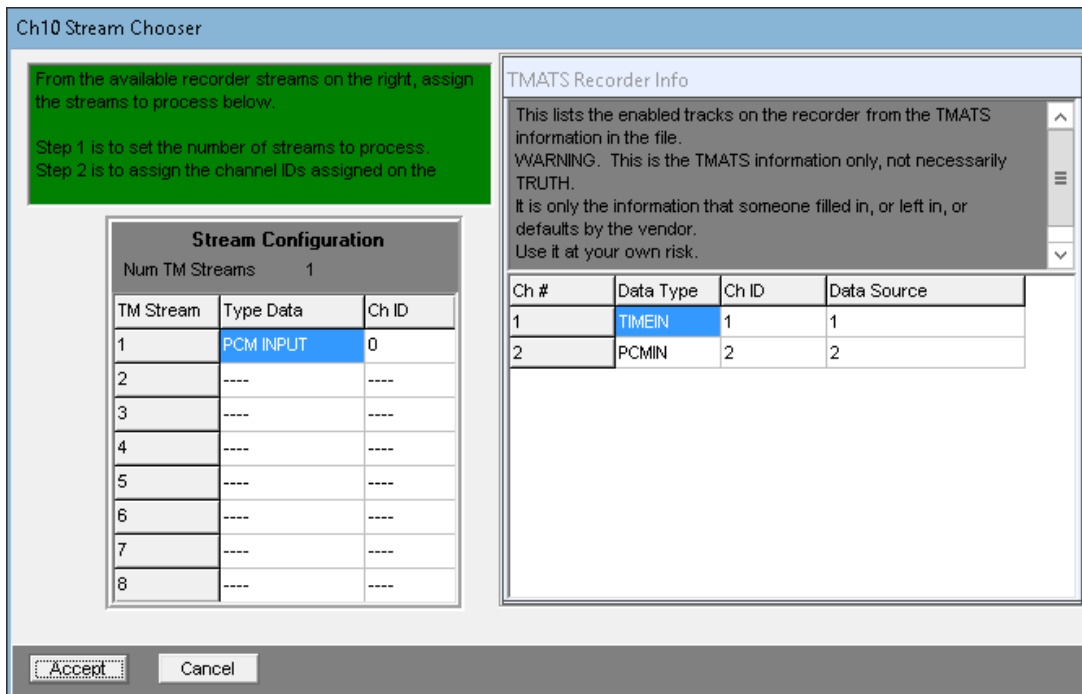


In this folder is the converted CH10 file:



The \*.CvtNotes file describes the conversion information.

I was able to use the **Ch10Converter.exe** to convert the \*.CH10 file back to \*.ARK, and use this converted file for LDPS\_8x Playback.



I don't have an official CH10 Recorder (Wideband Systems, Sypris, Heim, Wyle G2, Metrum, etc.) for testing this Tool.