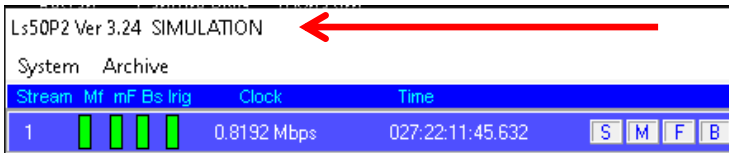


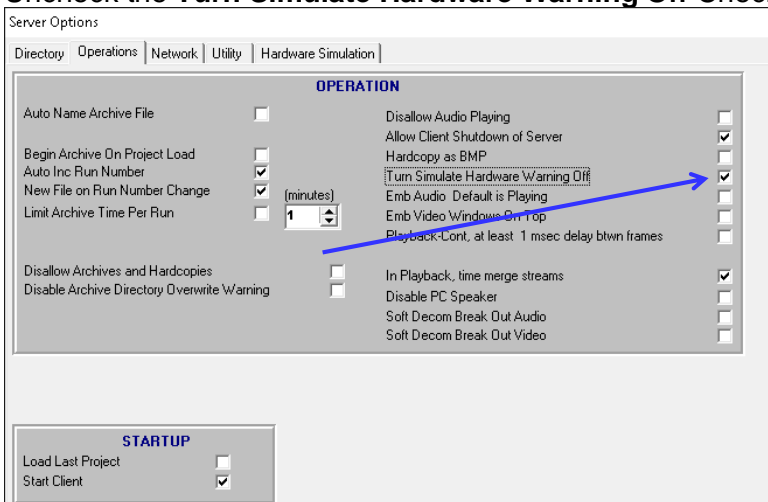
# Installing LDPS\_10x for Windows 10x64 with Lumistar Cards

First perform the steps found in the “Installing LDPS\_10x for Windows 10x64 - Sim Mode” document.

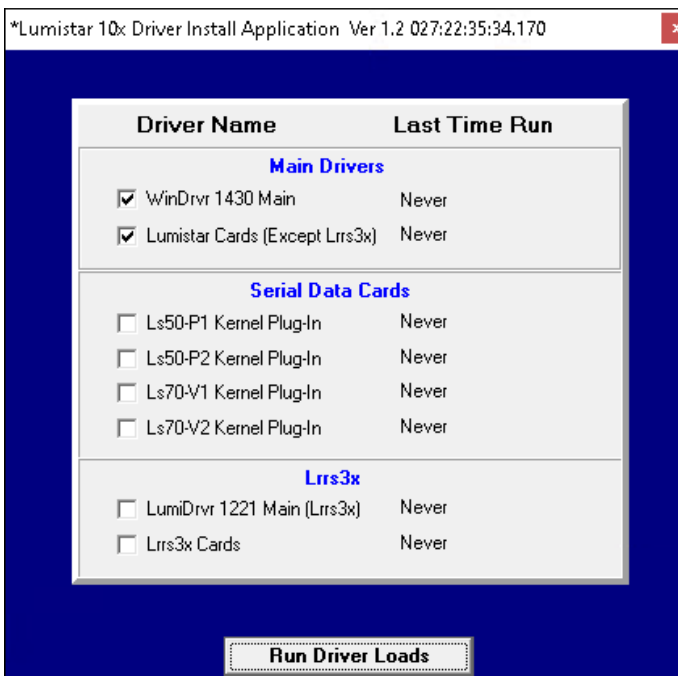
An indication that **LDPS-10X** is in the Simulation Mode, you will notice that the Ls50P2 Decom flashes **Simulation**:



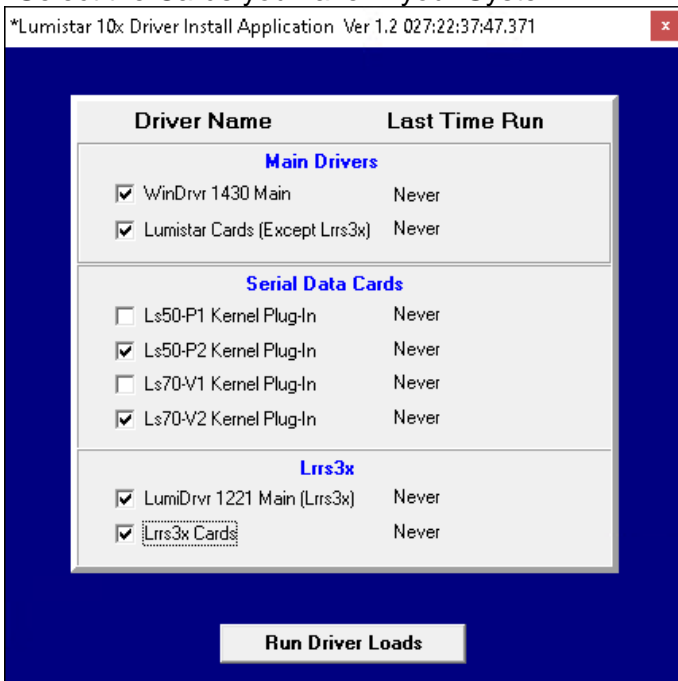
Uncheck the **Turn Simulate Hardware Warning Off** CheckBox below:



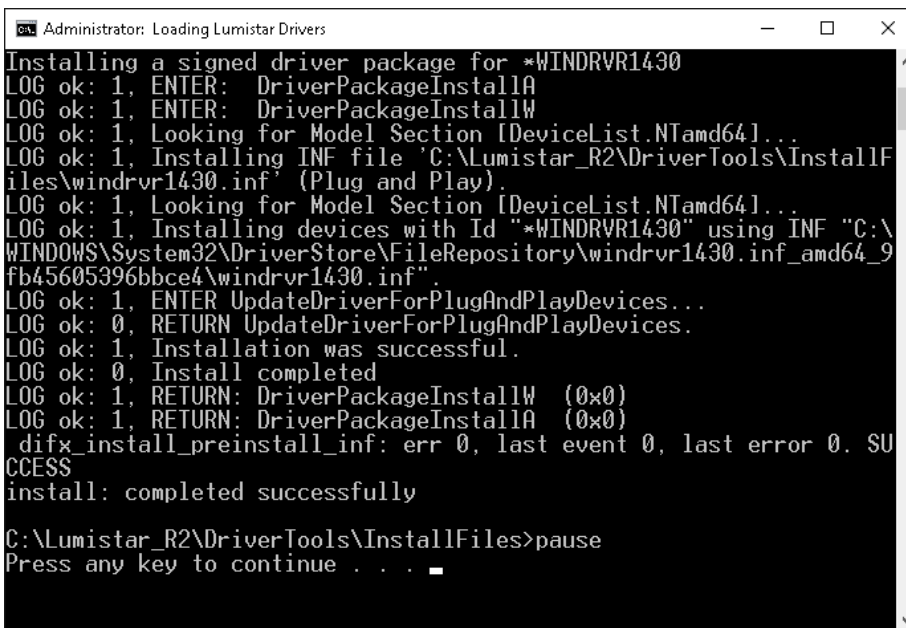
Run **C:\Lumistar\_R2\DriverTools\DriverInstall\_1430\_App.exe** as Administrator.



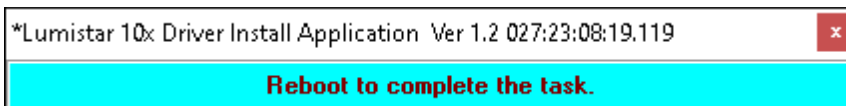
Select the Cards you have in your System.



Click the **Run Driver Loads** Button.



Press any key – until no more screens.

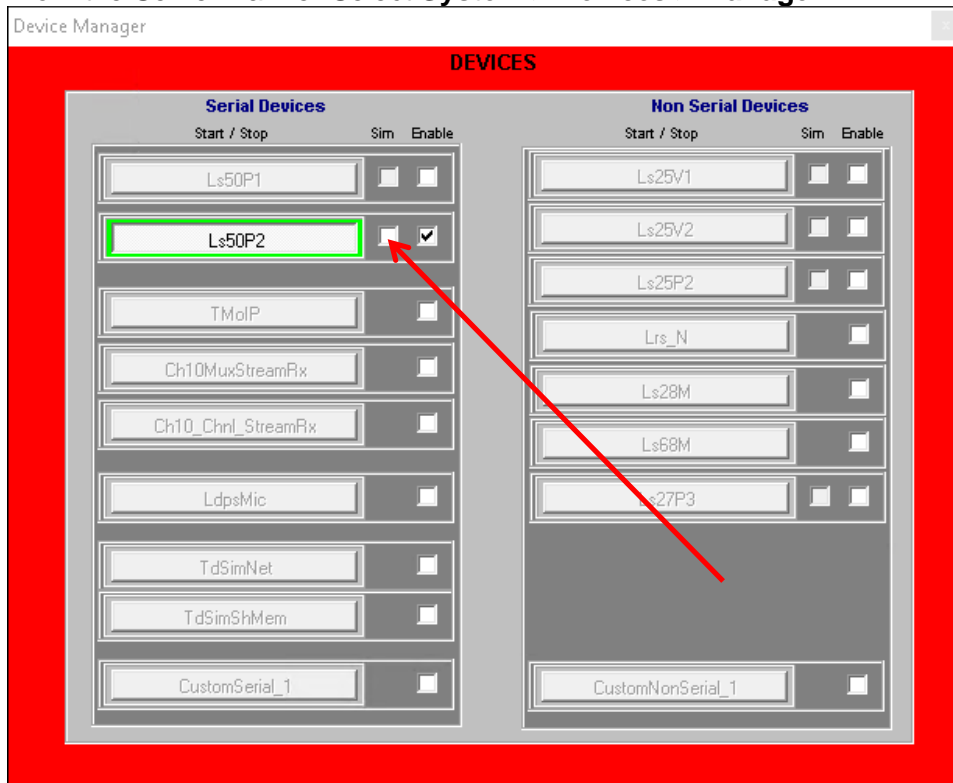



Close this application.

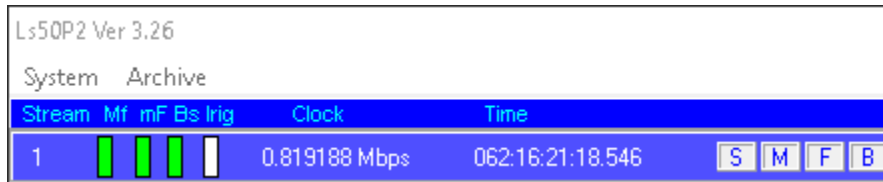


Double-Click the **LDPS10x Ser...**, Ldps10xSer...

From the Server Banner Select **System > Devices > Manage:**

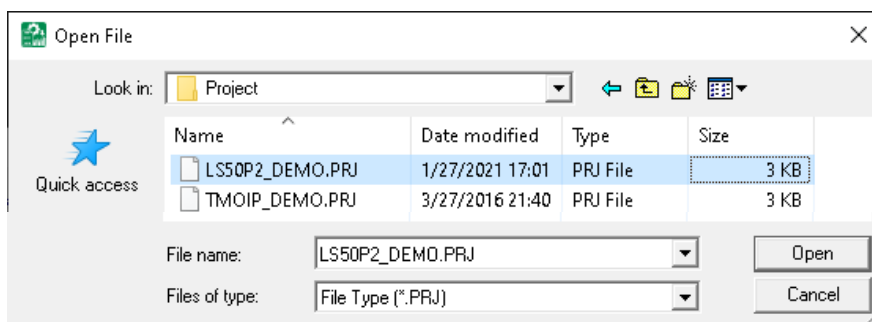


Uncheck the **Sim** Box as indicated above, then close the application by Clicking the . If you have **Ls50P2** cards, it will show at least one Decom.



Notice, no **Simulation** Banner is flashing now.

To test **Ls50P2** card operation, from the **Server Banner**, Select **Project > Load:**



Select **LS50P2\_DEMO.PRJ**, then Click the **Open** Button.



Moving Displays indicate LDPS\_10x is talking to the Ls50P2 card.

When finished, From the Server Banner, Select **Project > Close**

Finally, on the **Client** Click the Master Shutdown Button to Shutdown the LDPS\_10x program.