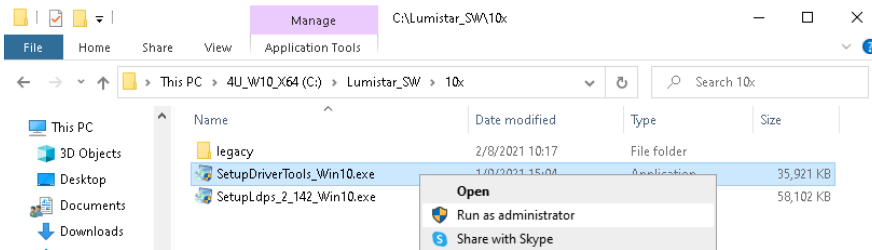


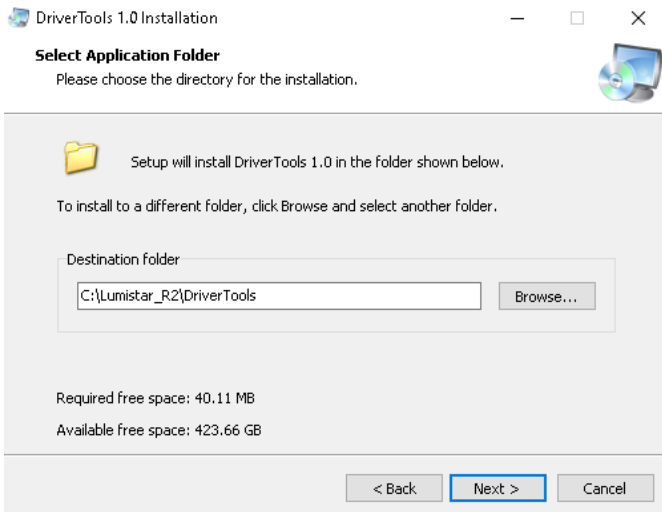
Installing LDPS_10x for Windows 10x64 - Sim Mode

Download **SetupDriverTools_Win10.exe** and **Setup_Ldps10x_2_142_Win10.exe**, then save them in a convenient location.

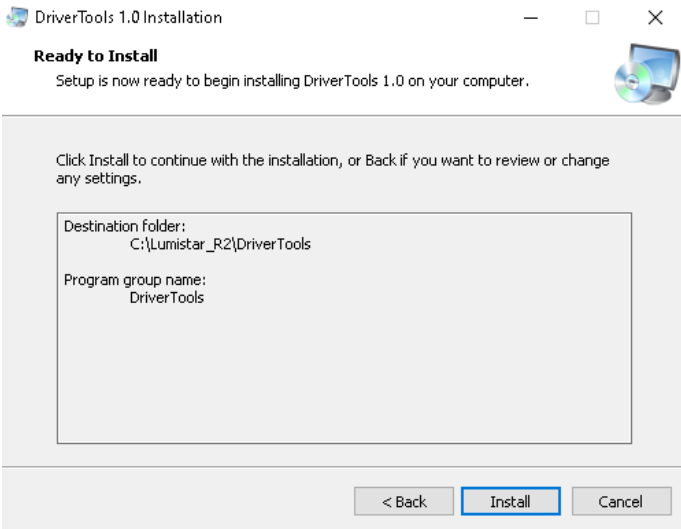
From File Explorer and select **SetupDriverTools_Win10.exe** and **Run as administrator**:



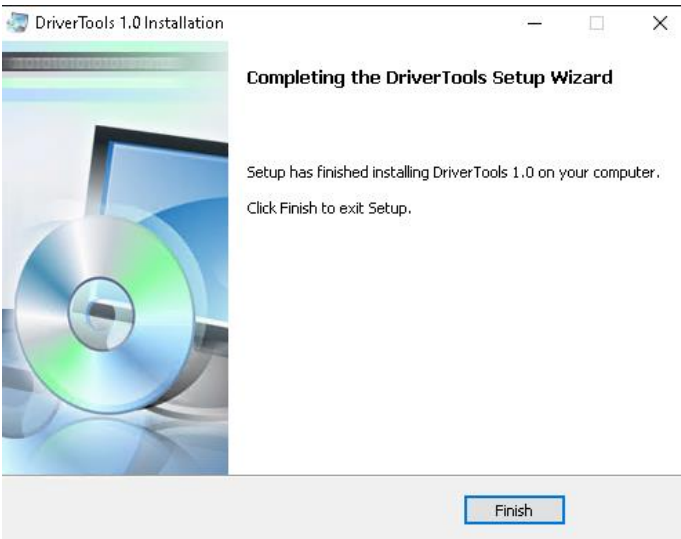
Click the **Next >** Button.



Click the **Next >** Button.

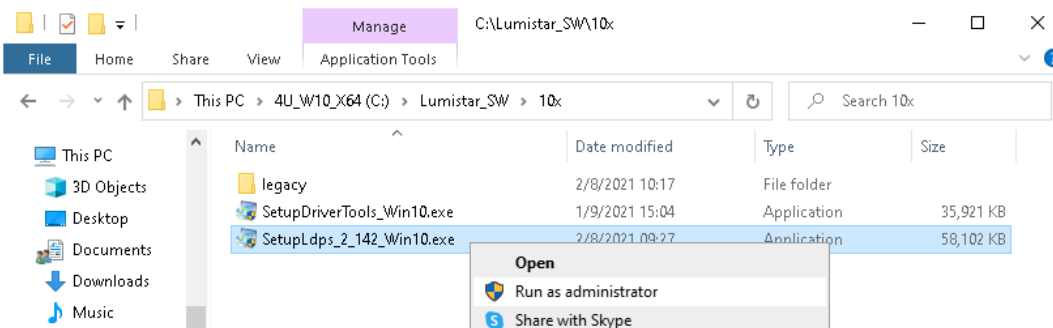


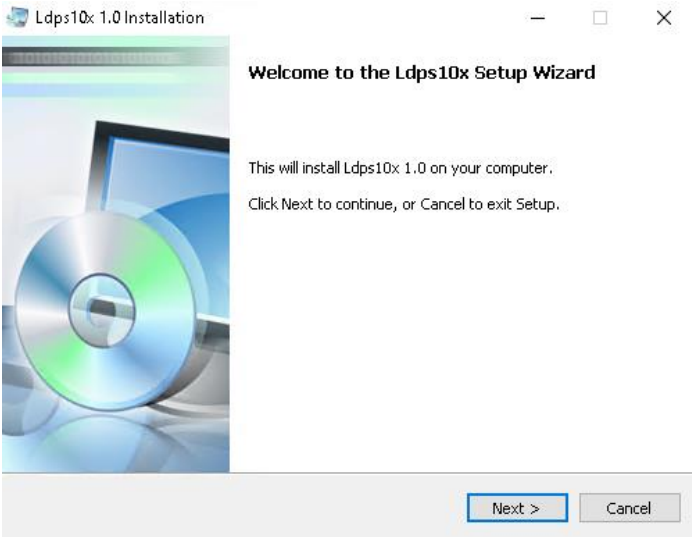
Click the **Install** Button.



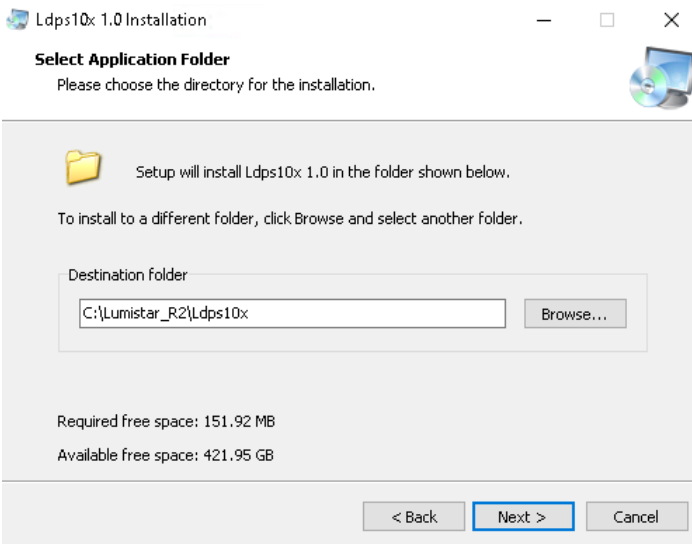
Click the **Finish** Button.

From File Explorer and select **SetupLdps_2_141_Win10.exe** and **Run as administrator**:

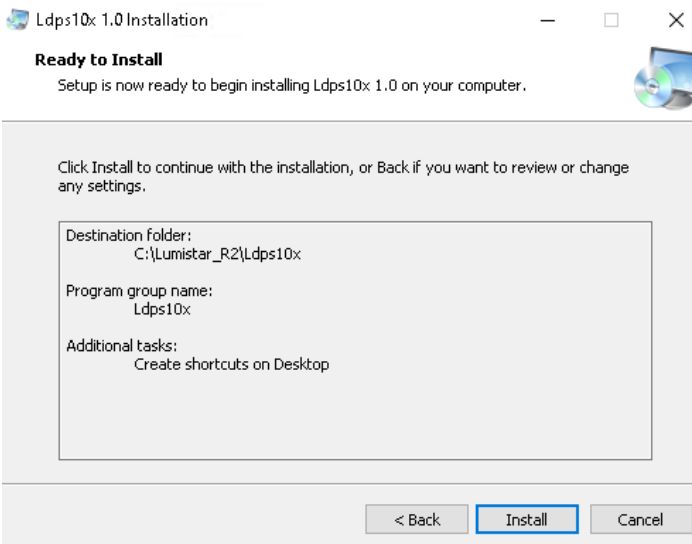




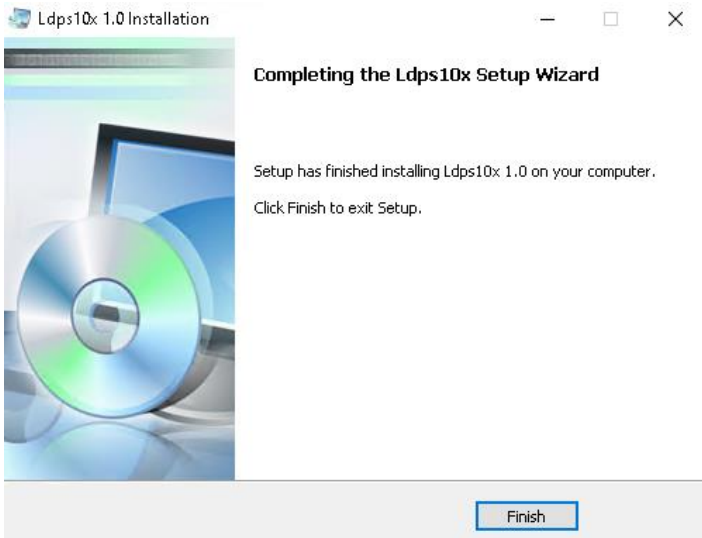
Click the **Next >** Button.



Click the **Next >** Button.



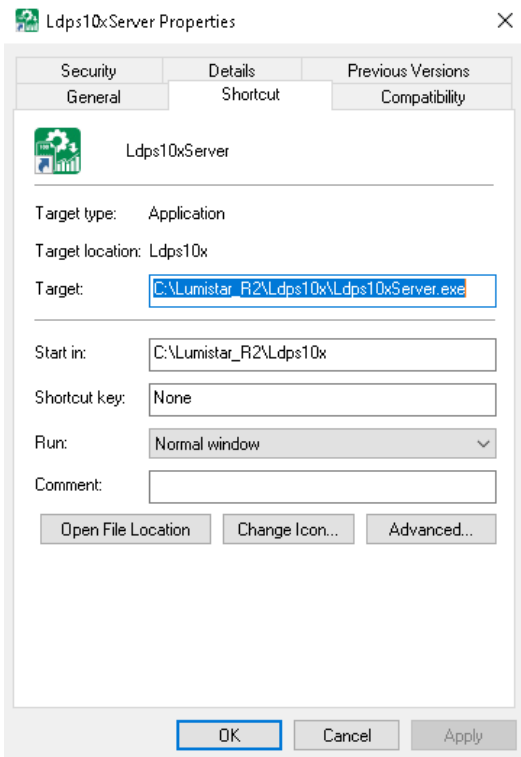
Click the **Install** Button.



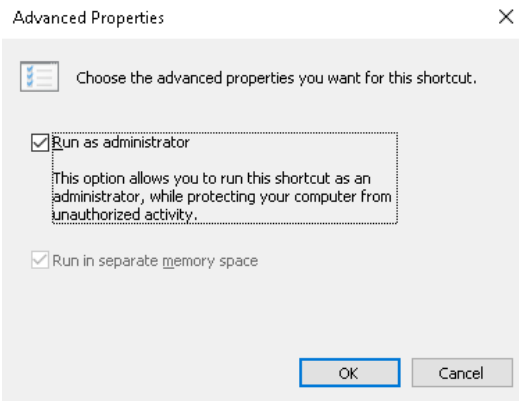
Click the **Finish** Button.



Right-Click the **Ldps10xSer...** Icon and select **Properties**:



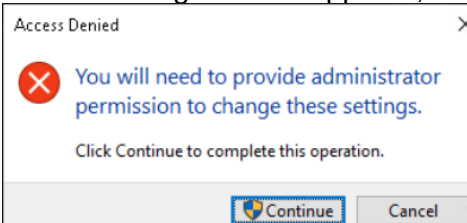
Click the **Advanced...** Button>



Check the **Run as administrator** CheckBox, then Click the **OK** Button:

Click the **Apply** Button at the bottom of the **Properties** Window:

If the following Window appears, Click the **Continue** Button



Finish by Clicking the **OK** Button at the bottom of the **Properties** Window.

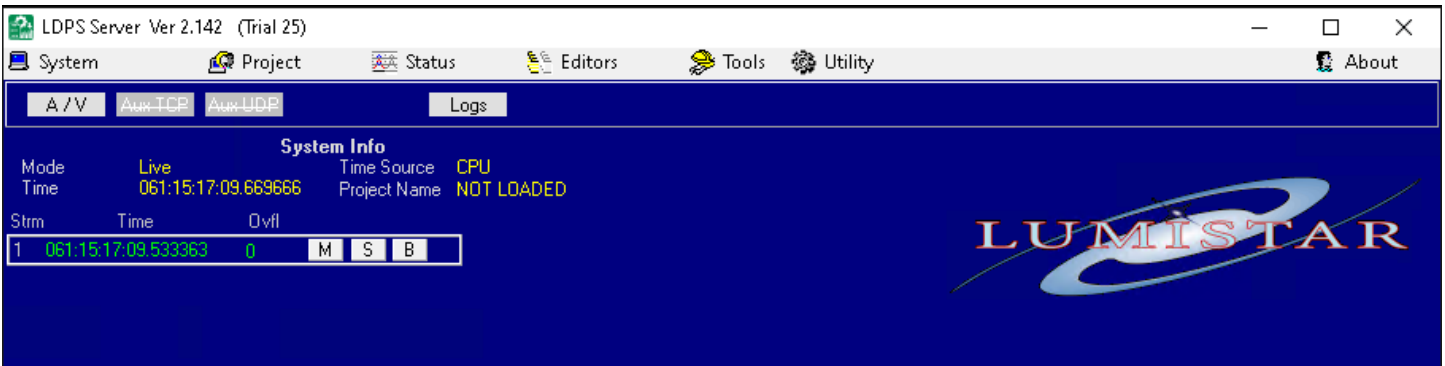


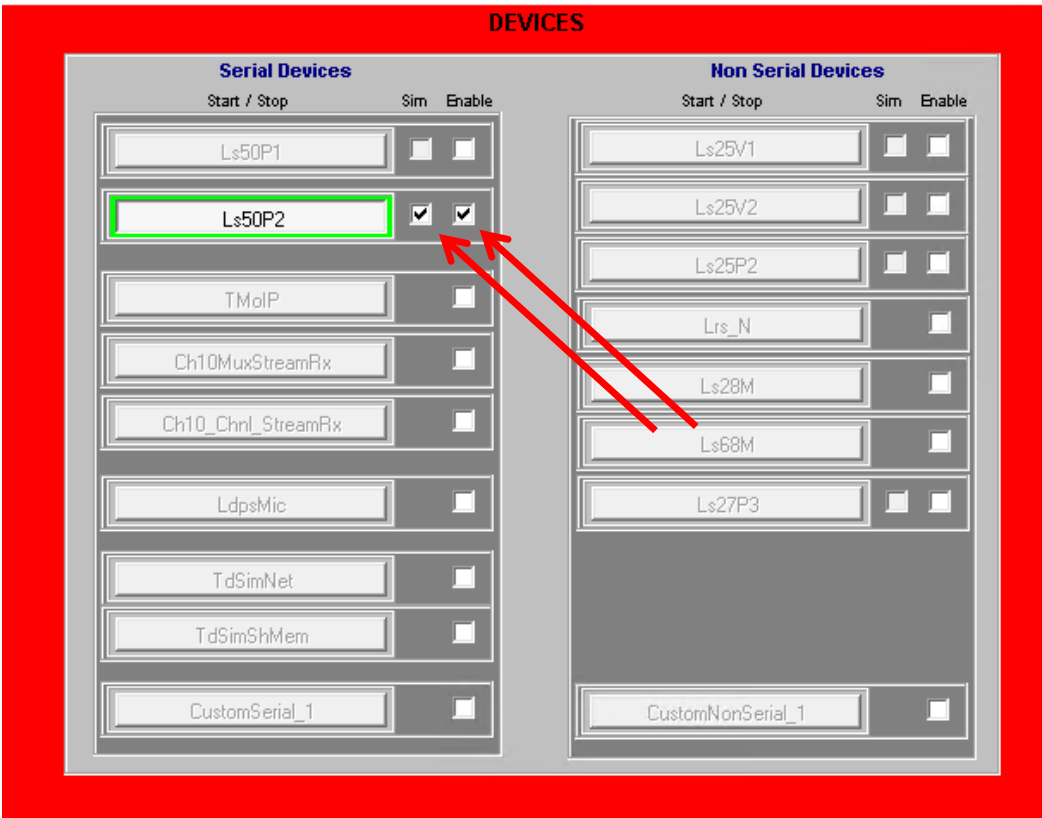
Repeat the above procdures for the Ldps10xCli... and the


To test **10x** operation we will use Simulated cards for the following



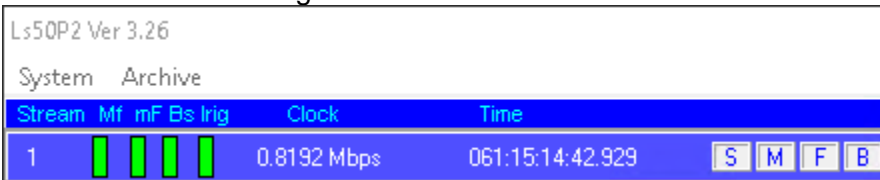
Double-Click the **LDPSServer 10x**, Ldps10xSer... icon to launch the 10x Server:



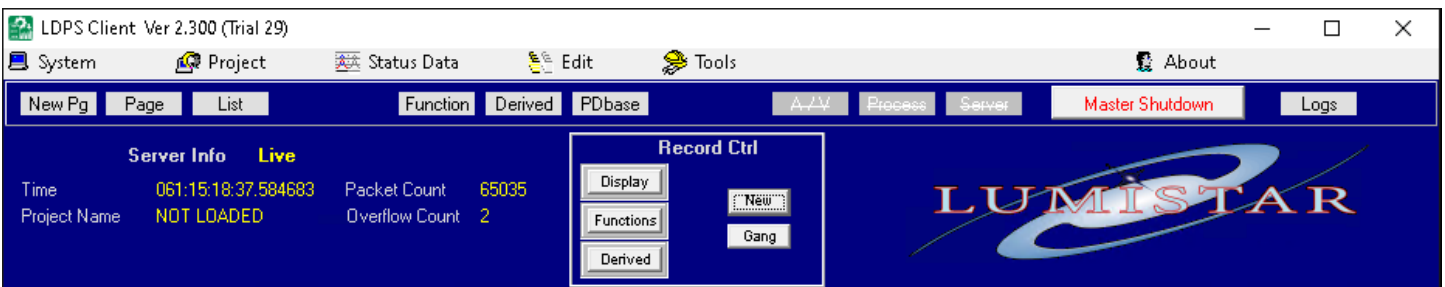


Put Checks in the CheckBoxes indicated above, the Click the 

This results in Simulating the **Ls50P2** Decom:



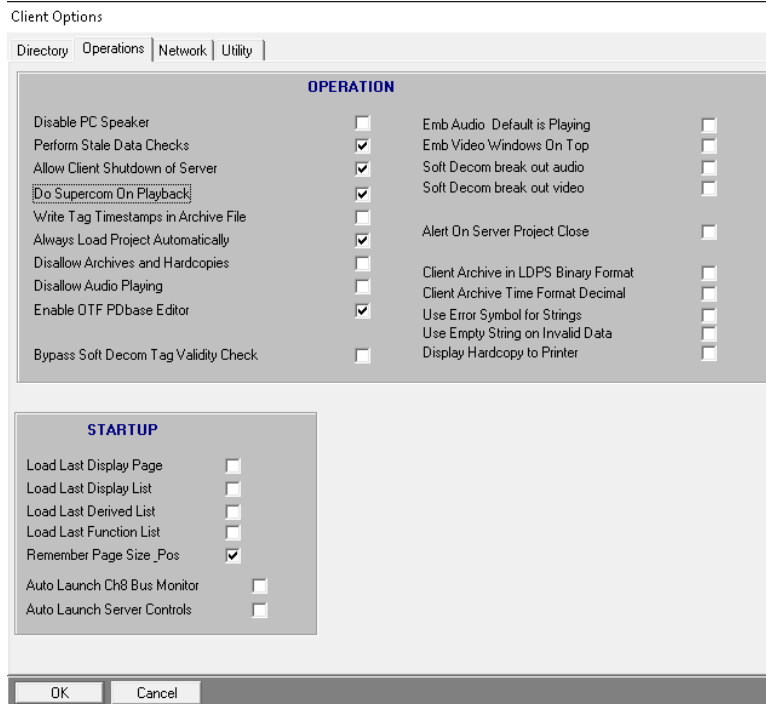
Double-Click the **LDPS10xClient**,  icon to launch the 10 Client:



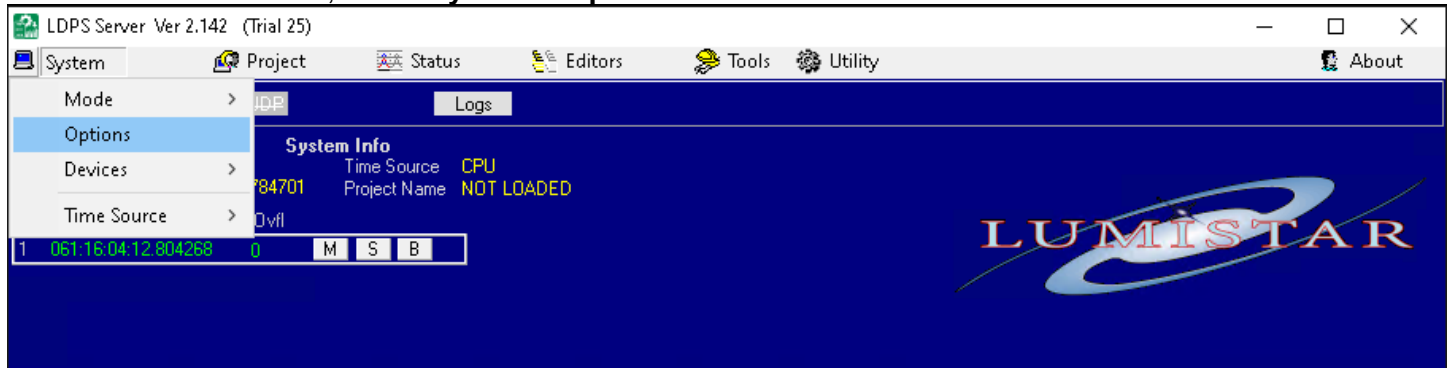
From the **Client Banner**, select **System > Options**:

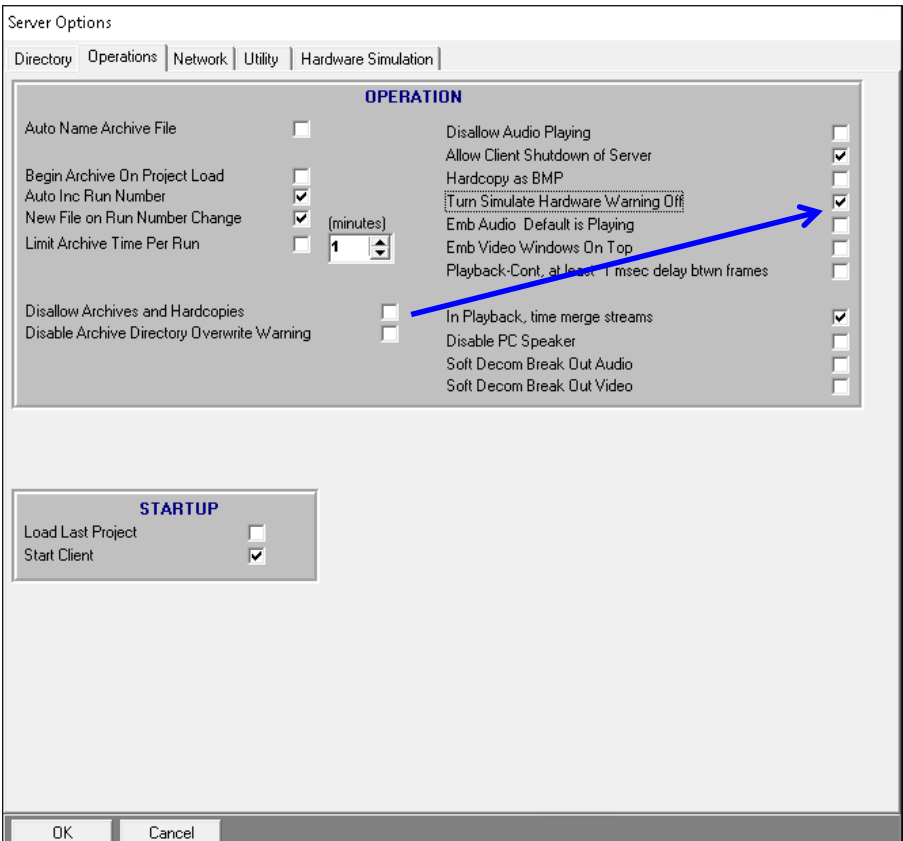


Put Checks in the CheckBoxes above, then Click the **OK** Button.



From the **Server Banner**, select **System > Options**:






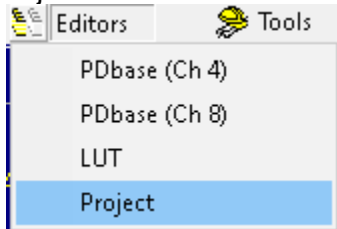
Check the above indicated Boxes, then Click the **OK** Button.

Shutdown the **Server** and **Client** programs by Clicking the  Button on each application Window.

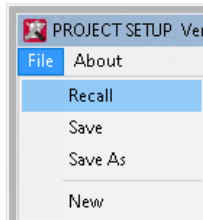


Double-Click the **LDPSServer 10x**,  icon to launch the 10x Server.

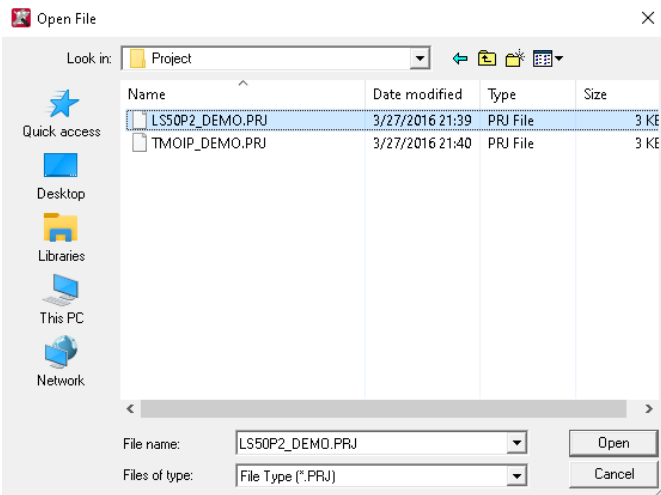
Unfortunately, the Projects included with this install are not complete. From the **Server** Banner Select:



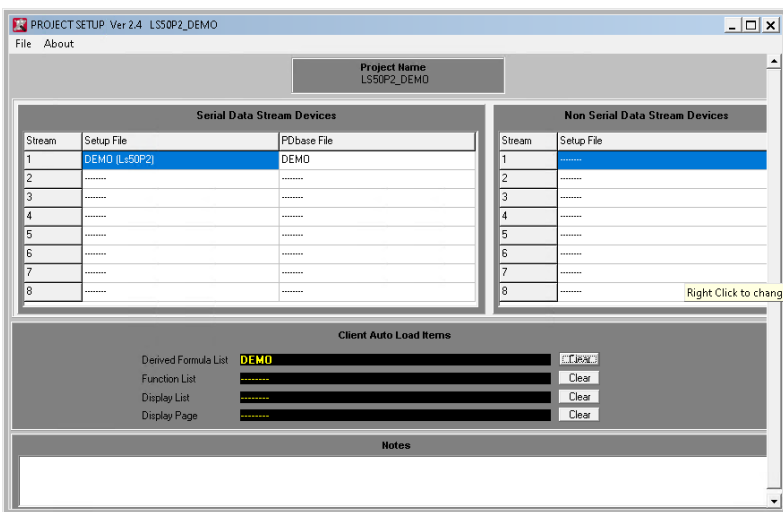
Editors > Project, :



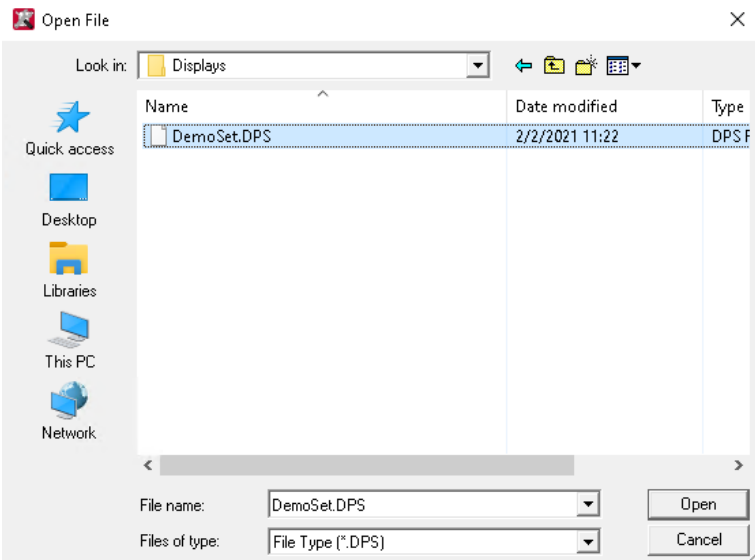
from the **Project Setup** Banner, Select and Recall,



Select **LS50P2_DEMO.PRJ** then Click the **Open** Button.

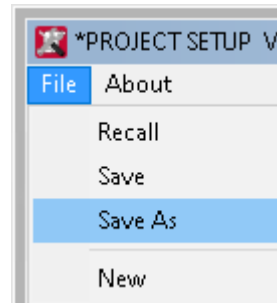
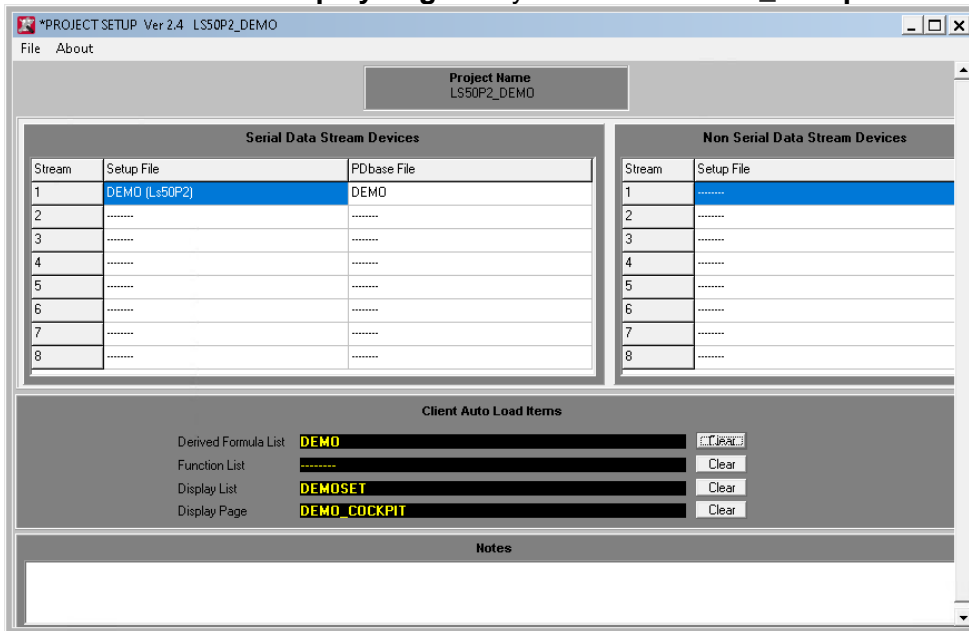


Click in the **Display List** area:



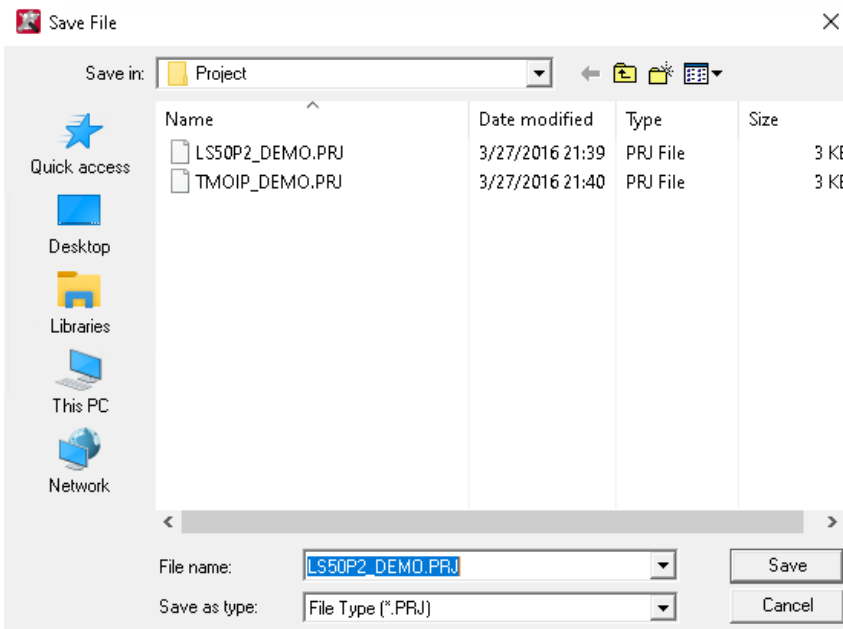
Select **DemoSet.DPS** then Click the **Open** Button.

Do the same for the **Display Page** entry and Select **demo_cockpit.DPY**:

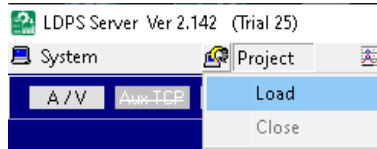


From the **Project Setup** Banner Select the **Save As**,

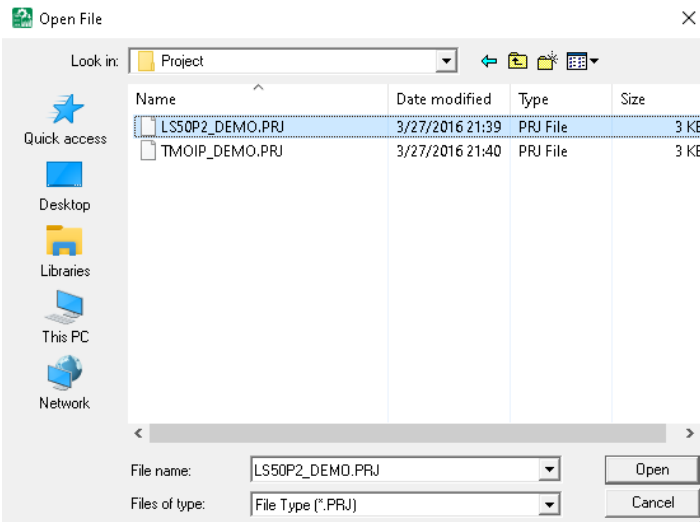
Option:



The proper file will already be selected or you can change the name to something else if desired. Click the **SAVE** Button. Next Close the **Project Setup** Window by Clicking the



On the **Server Bannmer**, Select **Project > Load**,



Then Select the **LS50P2_DEMO.PRJ** Project and Click the **OPEN** Button.
You should see Displays open with acivity indicating the installation was proper:



If you haven't purchased **LDPS_10x PRO** we can send you a Trail version which will give you a chance to investigate the extras found in the **PRO** variant.

You can close the **Server** and **Client** by Clicking the **Master Shutdown** button on the **Client**.