

# How to Upgrade LDPS\_8x to LDPS\_10x Projects

**NOTE:** LDPS\_8x and LDPS\_10x drivers are incompatible, use one version or the other.

LDPS\_8x was typically used LS-50 Decoms for data collection and either LS-25 or LS-27 receiver/down converters. This example doesn't include either an LS-25 or LS-27, but if included their files will distribute automatically without requiring conversion.

For this example, I will use a modified LDPS\_8x **DEMO.PRJ**. I change **all** the involved filenames to include '-8x' at the end of the filename (except the **.B50** file which isn't used in LDPS\_10x) since these exact named files exist in the **LDPS\_10x** distribution. Loading the **DEMO-8x.PRJ** in LDPS\_8x yields:



I looks exactly the same and the original LDPS\_8x **DEMO.PRJ** Project except for the filenames.

Record a few seconds (maybe 15 seconds) of archive data which results in:

Directory of C:\lumistar\Ldps\_8x\User\ArchiveData\DEMO-8X\_1233\_1638

```

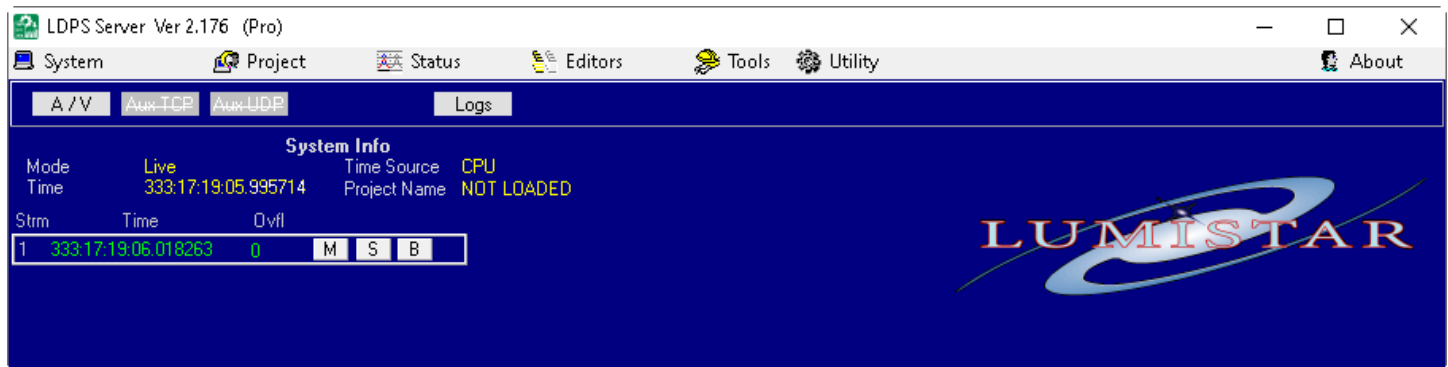
11/29/2022 16:38          826 DEMO-8X.DER
11/29/2022 16:38      425,230 DEMO-8X.PBIN
11/29/2022 16:38      369,504 DEMO-8X.PDB
11/29/2022 16:29         2,726 DEMO-8X.PRJ
11/29/2022 16:38       16,945 DEMO-8X_RUN_0.STAT
11/29/2022 16:38       15,121 DEMO-8X_RUN_1.STAT
11/29/2022 16:38    3,816,233 DEMO-8X_STREAM_1_RUN_0.ARK
11/29/2022 16:38         5,121 DEMO-8X_STREAM_1_RUN_1.ARK
11/29/2022 16:38     330,988 DEMO_SIM.B50
11/29/2022 16:38         475 LumistarDeviceCfg.Cfg
    10 File(s)      4,983,169 bytes
    
```

NOTE: If you are performing this procedure, your recorded directory will be DEMO-8X\_????\_????.

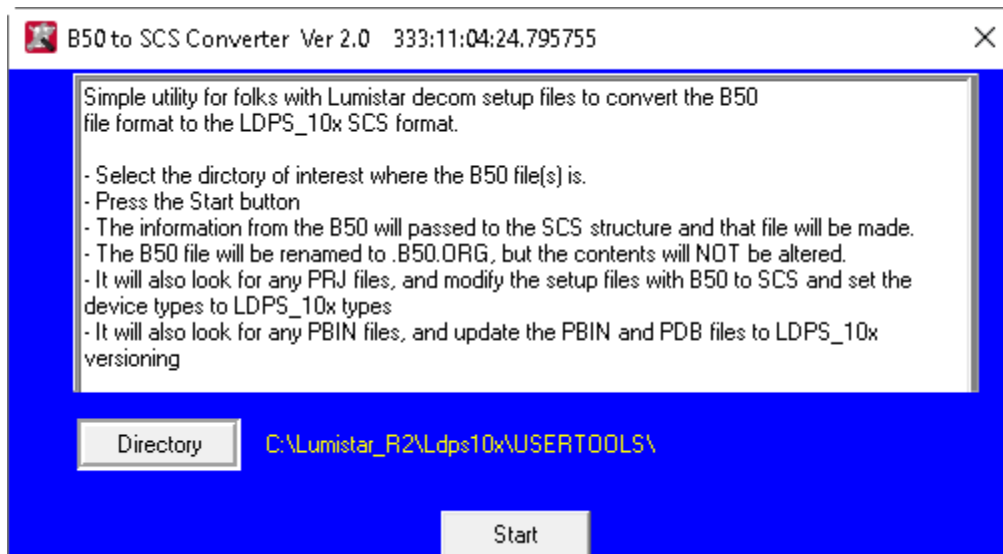
Copy this **DEMO-8X\_1233\_1638** archive folder to thexLDPS\_10x folder for archives.

```
C:\>xcopy C:\lumistar\Ldps_8x\User\ArchiveData\DEMO-8X_1233_1638
C:\Lumistar_R2\Ldps10x\User\ArchiveData\DEMO-8X_1233_1638 /s /i
C:\lumistar\Ldps_8x\User\ArchiveData\DEMO-8X_1233_1638\DEMO-8X.DER
C:\lumistar\Ldps_8x\User\ArchiveData\DEMO-8X_1233_1638\DEMO-8X.PBIN
C:\lumistar\Ldps_8x\User\ArchiveData\DEMO-8X_1233_1638\DEMO-8X.PDB
C:\lumistar\Ldps_8x\User\ArchiveData\DEMO-8X_1233_1638\DEMO-8X.PRJ
C:\lumistar\Ldps_8x\User\ArchiveData\DEMO-8X_1233_1638\DEMO-8X_RUN_0.STAT
C:\lumistar\Ldps_8x\User\ArchiveData\DEMO-8X_1233_1638\DEMO-8X_RUN_1.STAT
C:\lumistar\Ldps_8x\User\ArchiveData\DEMO-8X_1233_1638\DEMO-8X_STREAM_1_RUN_0.ARK
C:\lumistar\Ldps_8x\User\ArchiveData\DEMO-8X_1233_1638\DEMO-8X_STREAM_1_RUN_1.ARK
C:\lumistar\Ldps_8x\User\ArchiveData\DEMO-8X_1233_1638\DEMO_SIM.B50
C:\lumistar\Ldps_8x\User\ArchiveData\DEMO-8X_1233_1638\LumistarDeviceCfg.Cfg
10 File(s) copied
```

Launch the **LDPS\_10x Server**:

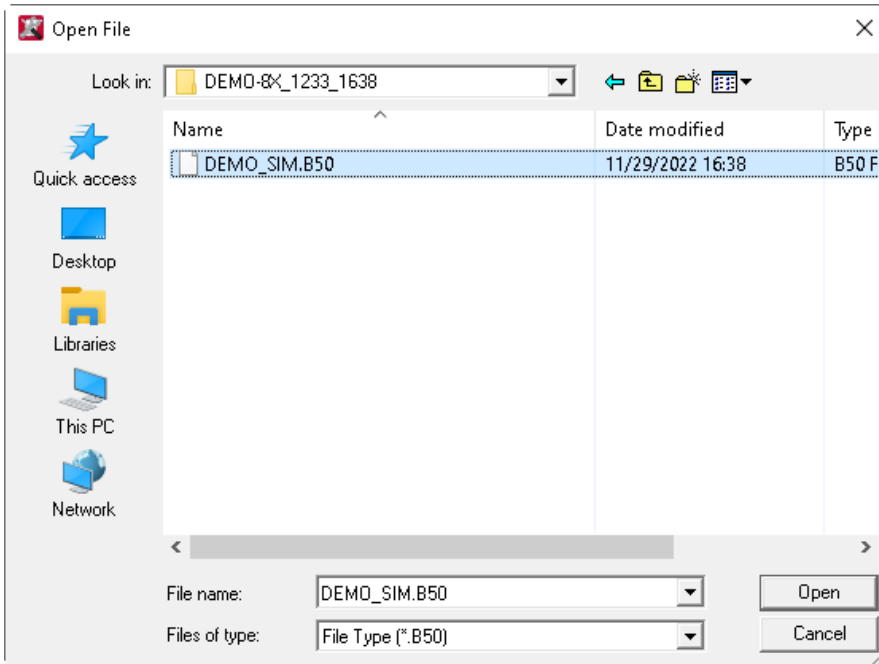



From the Server Banner select **Tools>B50**

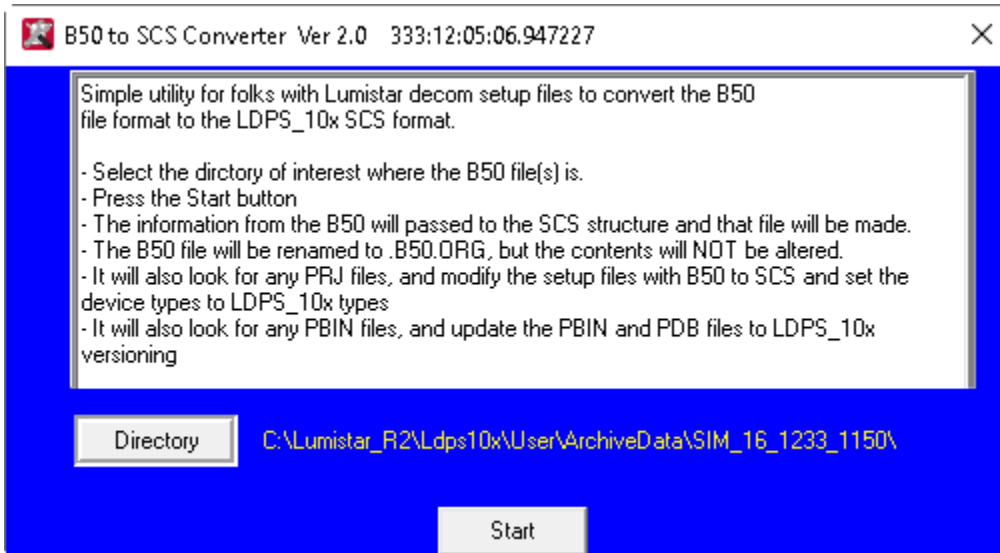



Click the **Directory** Button and steer to:


C:\Lumistar\_R2\Ldps10x\User\ArchiveData\DEMO-8X\_1233\_1638\  
Select the **B50** file, in this case: **DEMO\_SIM.B50**.



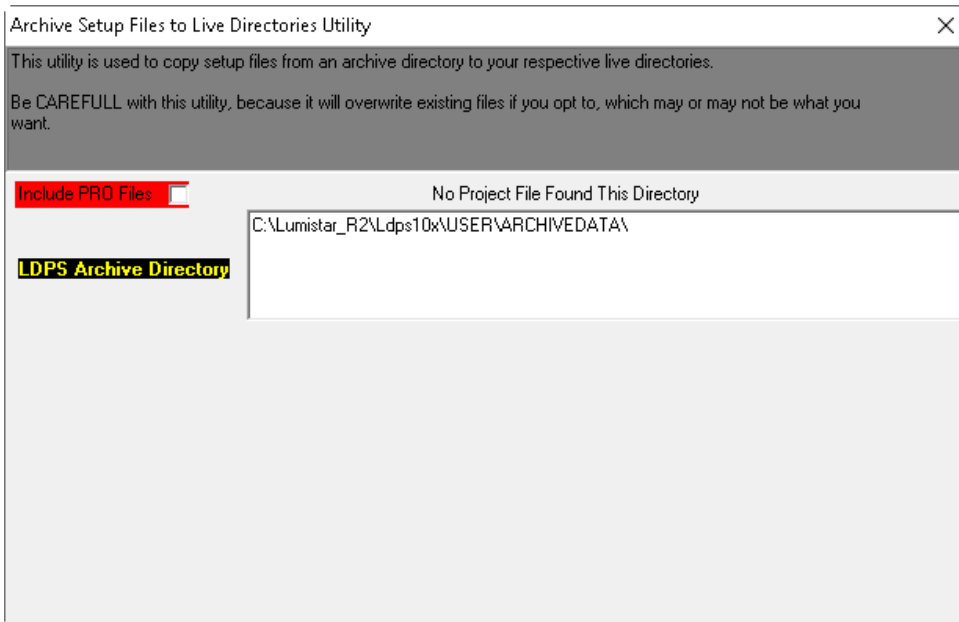
Click the  Buton.



Click the  Button. A Yellow rectangle (with text) next to the **Start** button will flash indicating the conversion was accomplished.

Click the  Button to close the **B50toScs** Tool.

From the Server Banner select **Utility>Archive Dir to Live Dirs**.

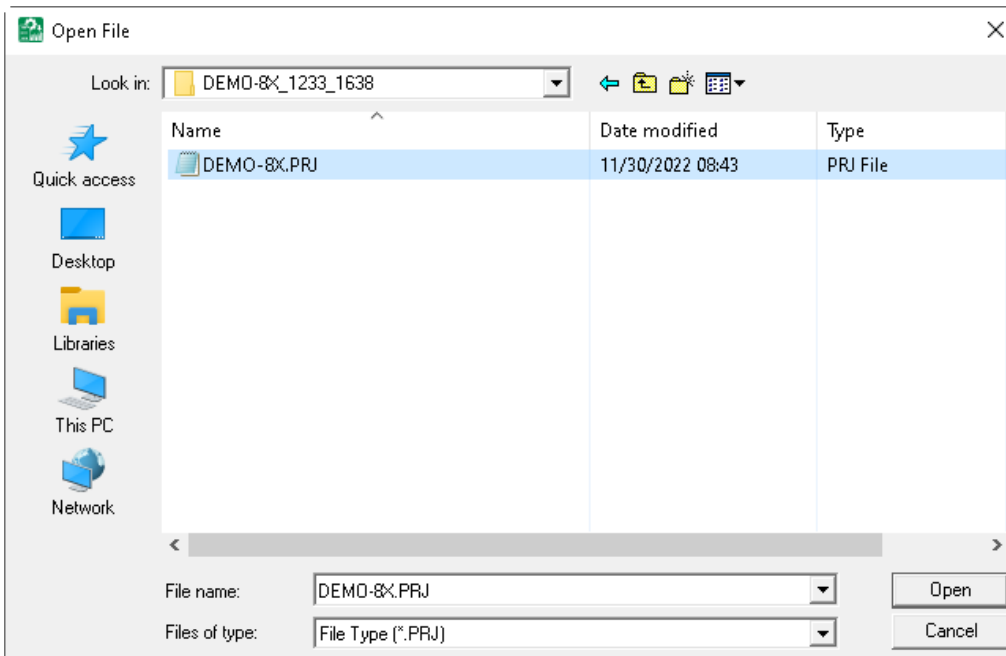


Read the warning because it can overwrite existing files with the same name. Also, read the document found in:

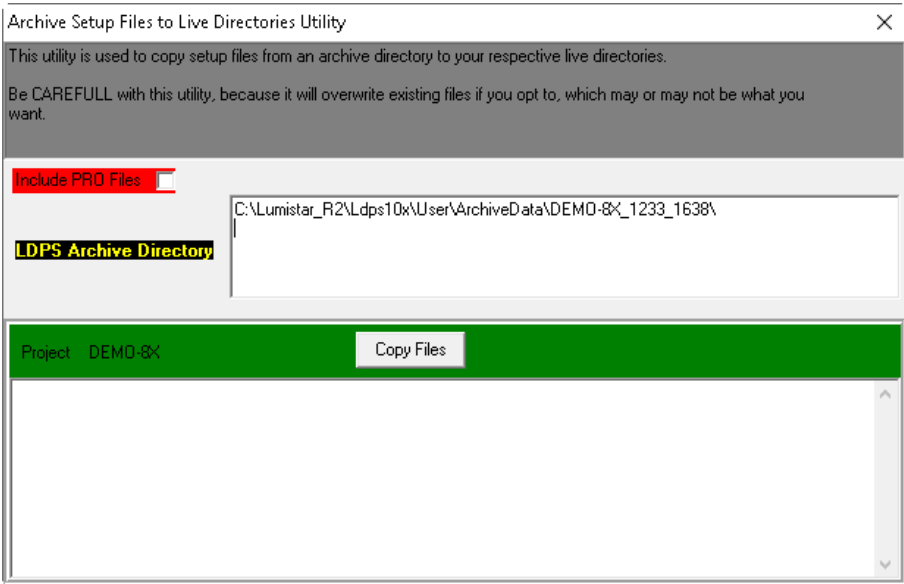
**C:\Lumistar\_R2\Ldps10x\Documentation\Docs\_UserTools\ServerUtility\_ArchiveFilesToLiveDirs.doc**

Concerning the **Include PRO Files**  option, I don't need it for this conversion (include it if you have PRO related files in the Archive folder).

Left-click in the white TextBox, then click into the archive folder you have been working with:

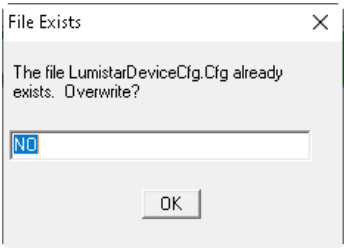


Select the Project to distribute: **DEMO-8x.PRJ**, then click the **Open** Button.

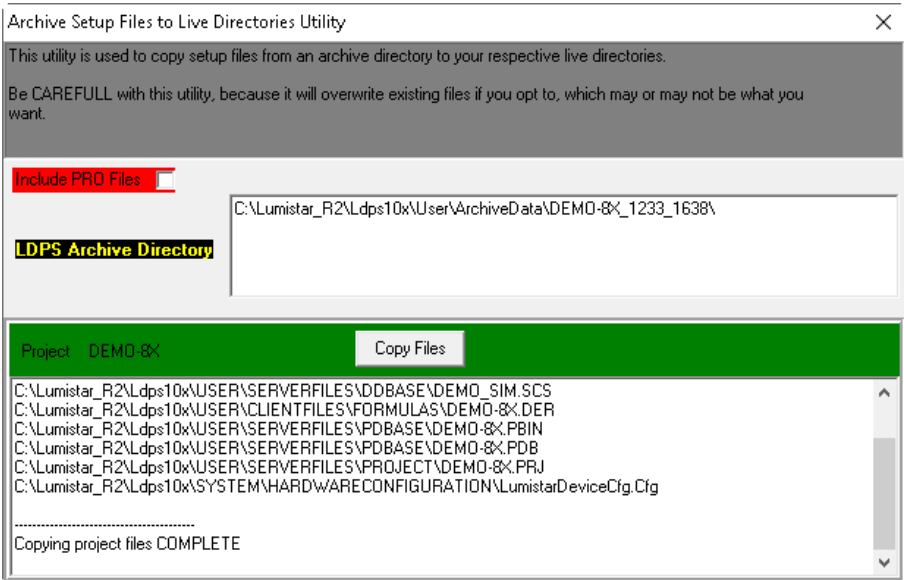


Click the **Copy Files** Button to distribute the files to the appropriate LDPS\_10x folders.

**NOTE:** If you receive the following warning:



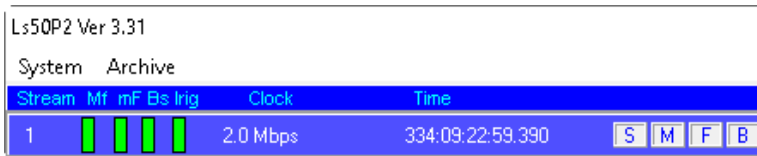
It means you are about to change your Lumistar Device Configuration. If you have different Lumistar cards or no cards, you may want to reply **NO** to this option (especially if this conversion is for Playback only).



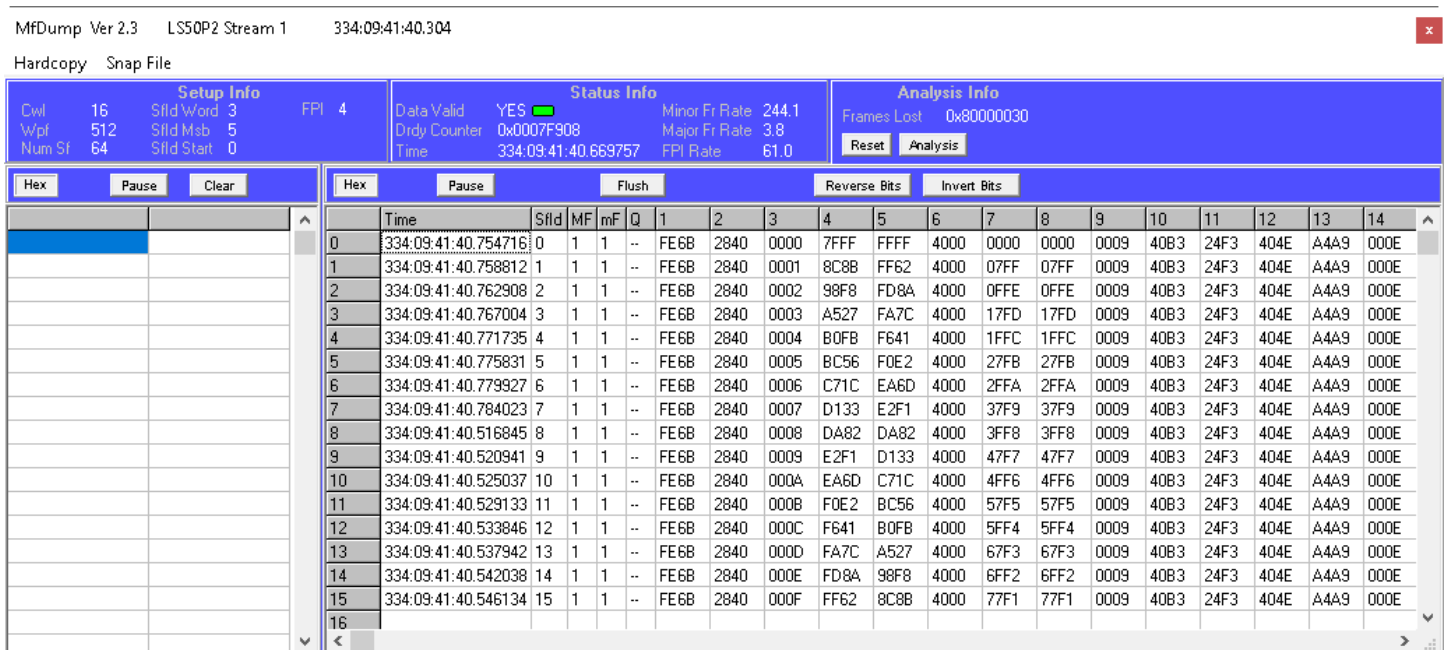
Click the  Button to close the **Archive Setup Files to Live Directories** Utility.

Now you should be able to load your converted Project, **DEMO-8x.PRJ** in the Live Mode. If you are simulating the PCM stream, you will see the PCM frame activity.

From the **LS-50P2** control:



Click the  Button to view the Major Frame Dump:



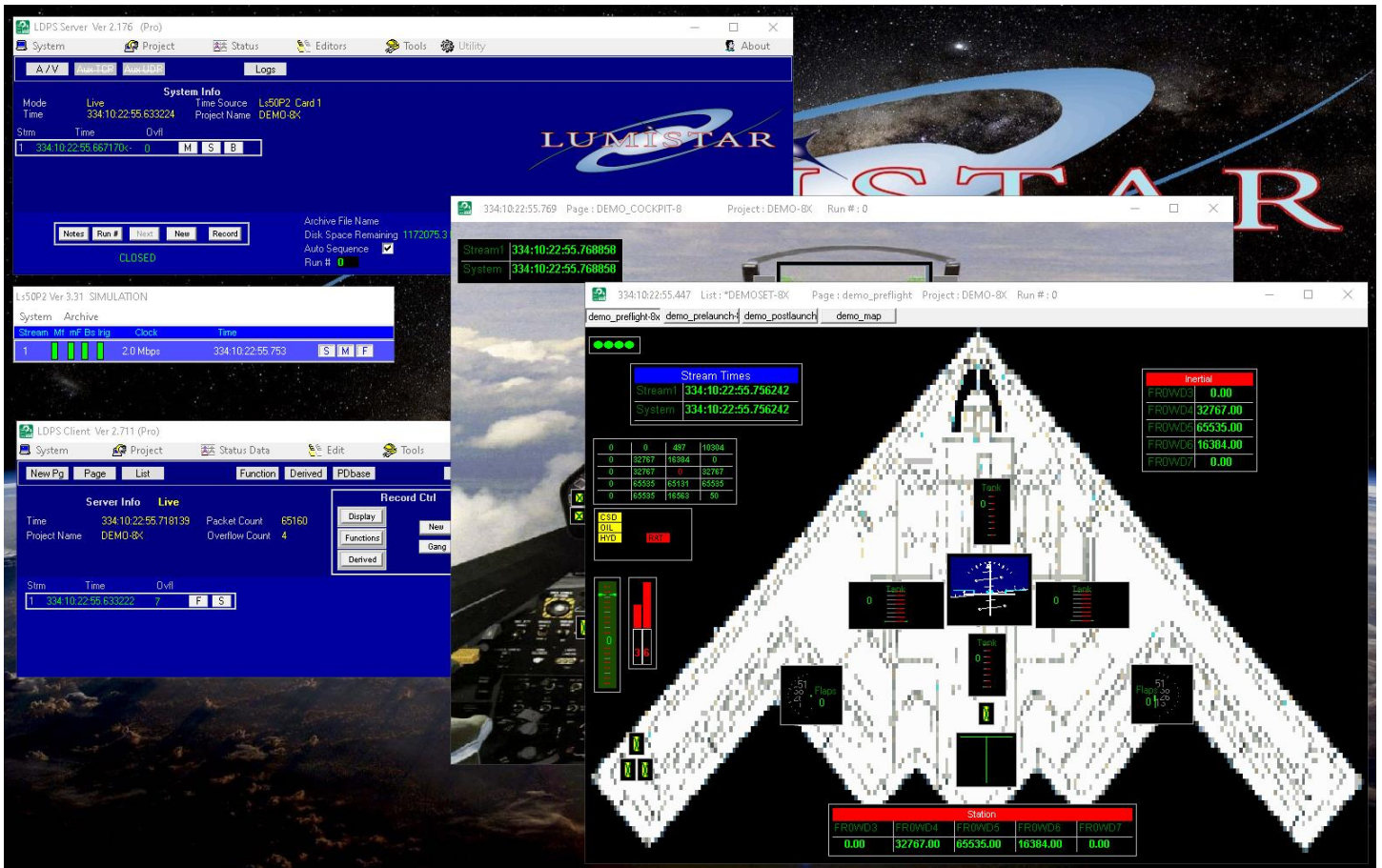
After closing the Live Project, you will need to copy your **Display** files from **LDPS\_8x** to **LDPS\_10x**.

Copy the LDPS\_8x **DEMO-8x.PRJ** display Pages and List file to the LDPS\_10x folder:

```
C:\>copy C:\lumistar\Ldps_8x\User\ClientFiles\Displays\*-8x.*
C:\lumistar_R2\Ldps10x\User\ClientFiles\Displays\
C:\lumistar\Ldps_8x\User\ClientFiles\Displays\DemoSet-8x.DPS
C:\lumistar\Ldps_8x\User\ClientFiles\Displays\DEMO_COCKPIT-8x.DPY
C:\lumistar\Ldps_8x\User\ClientFiles\Displays\demo_map-8x.DPY
C:\lumistar\Ldps_8x\User\ClientFiles\Displays\demo_postlaunch-8x.DPY
C:\lumistar\Ldps_8x\User\ClientFiles\Displays\demo_preflight-8x.DPY
C:\lumistar\Ldps_8x\User\ClientFiles\Displays\demo_prelaunch-8x.DPY
6 file(s) copied.
```

Use media or a network connection if LDPS\_10x is on a different computer.

You should now be able to run the LDPS\_8x DEMO-8x.PRJ Project with LDPS\_10x.



It is suggested re-saving each display page to incorporate any LDPS\_10x additional configuration information.

If some Strip Charts aren't working properly, you may need to re-instantiate them and assign the parameters and settings.