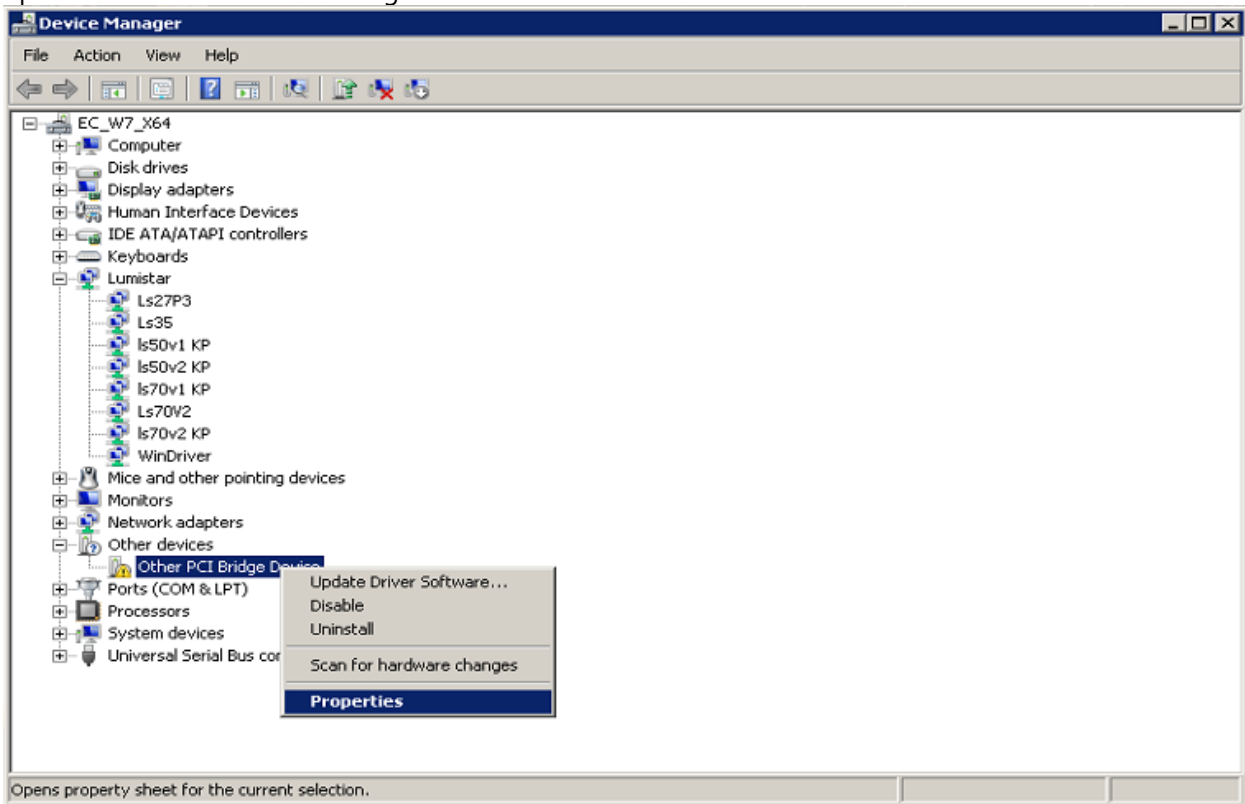
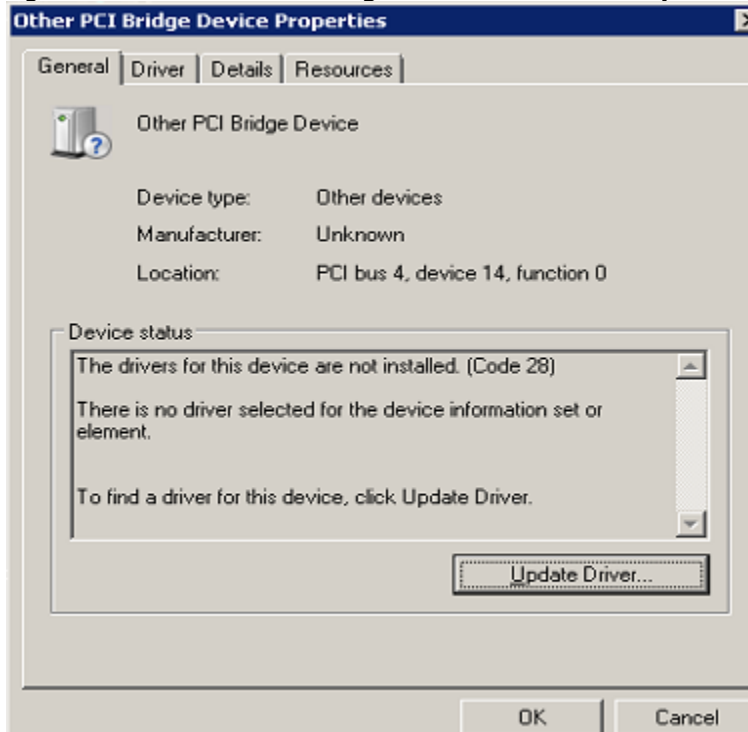


# How to Assign Lumistar Card Device Drivers for W7 (x64) LDPS\_8x

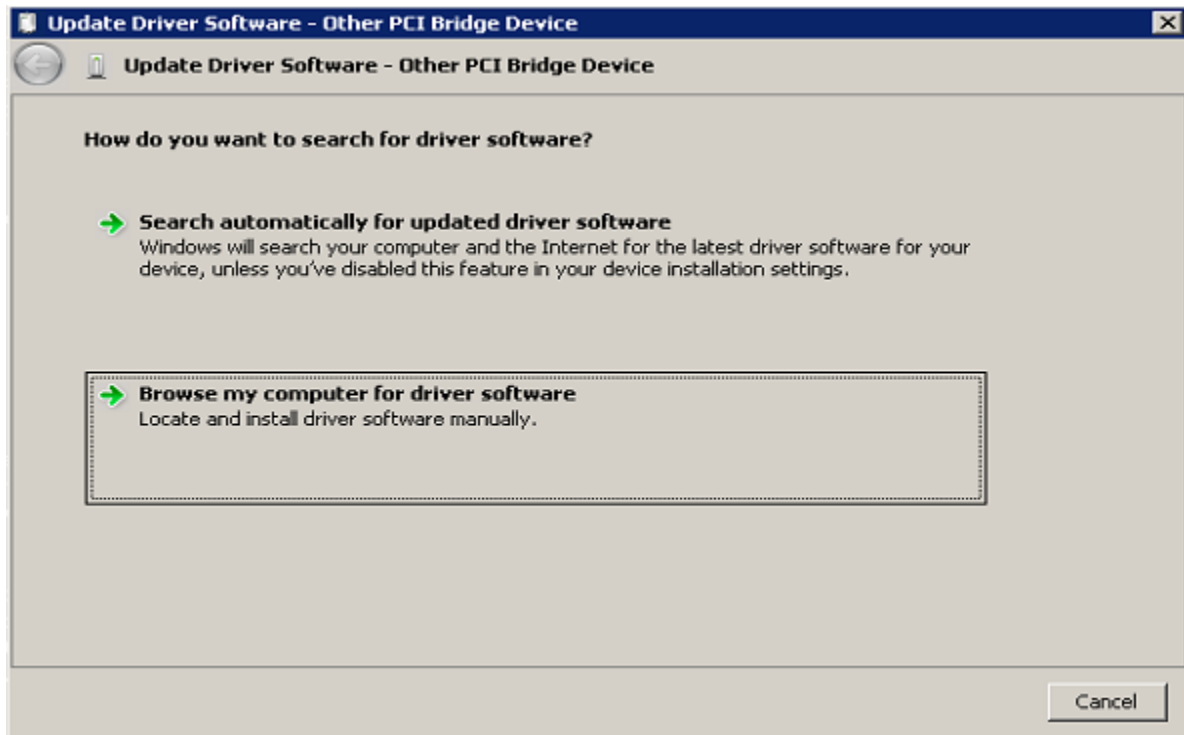
Open the Windows Device Manager:



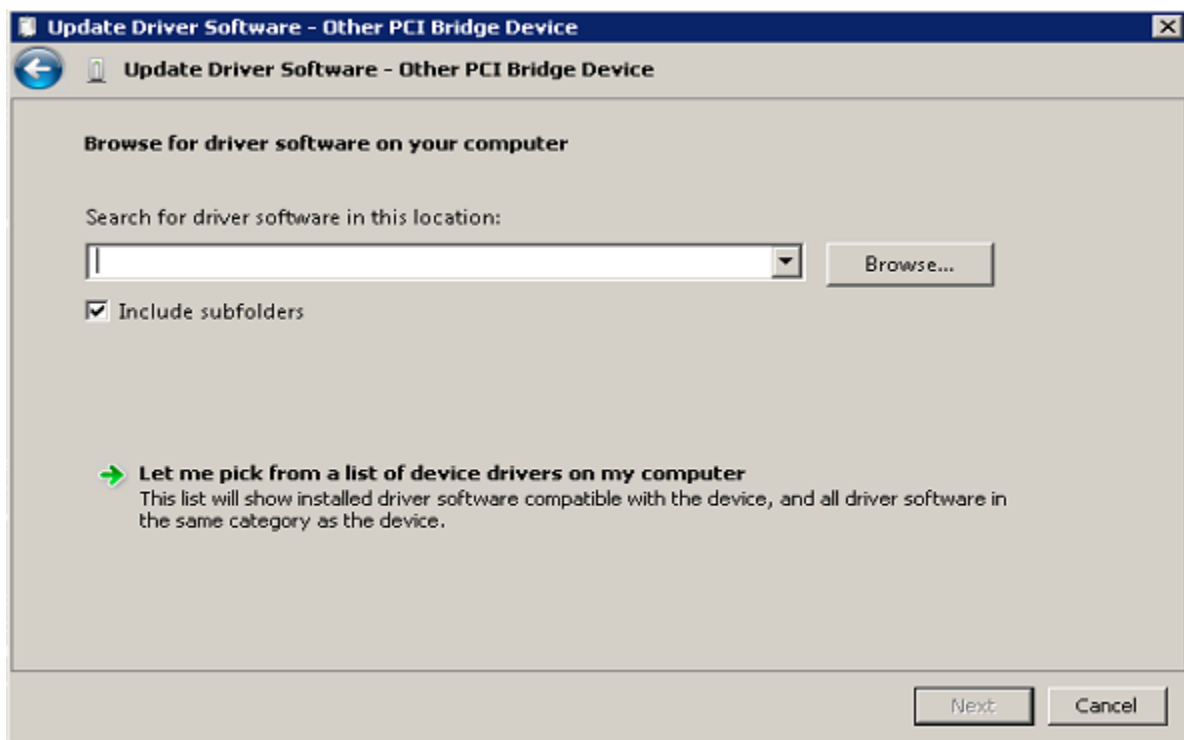
Right-Click the **Other PCI Bridge Device** and select **Properties**.



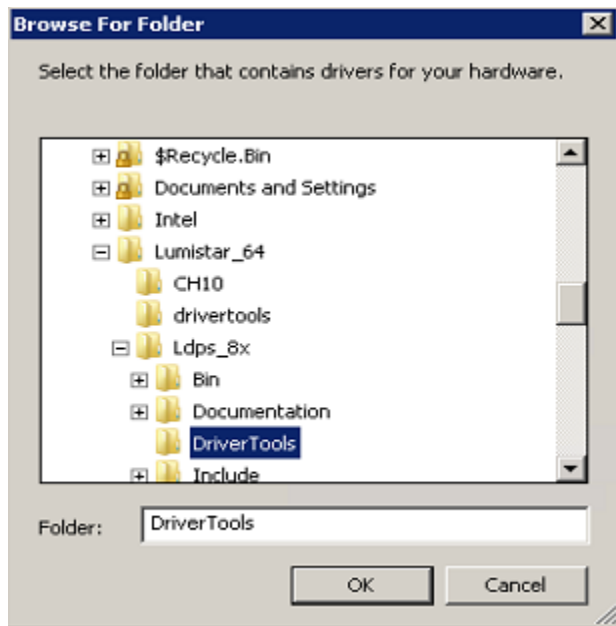
Click the **Update Driver...** Button



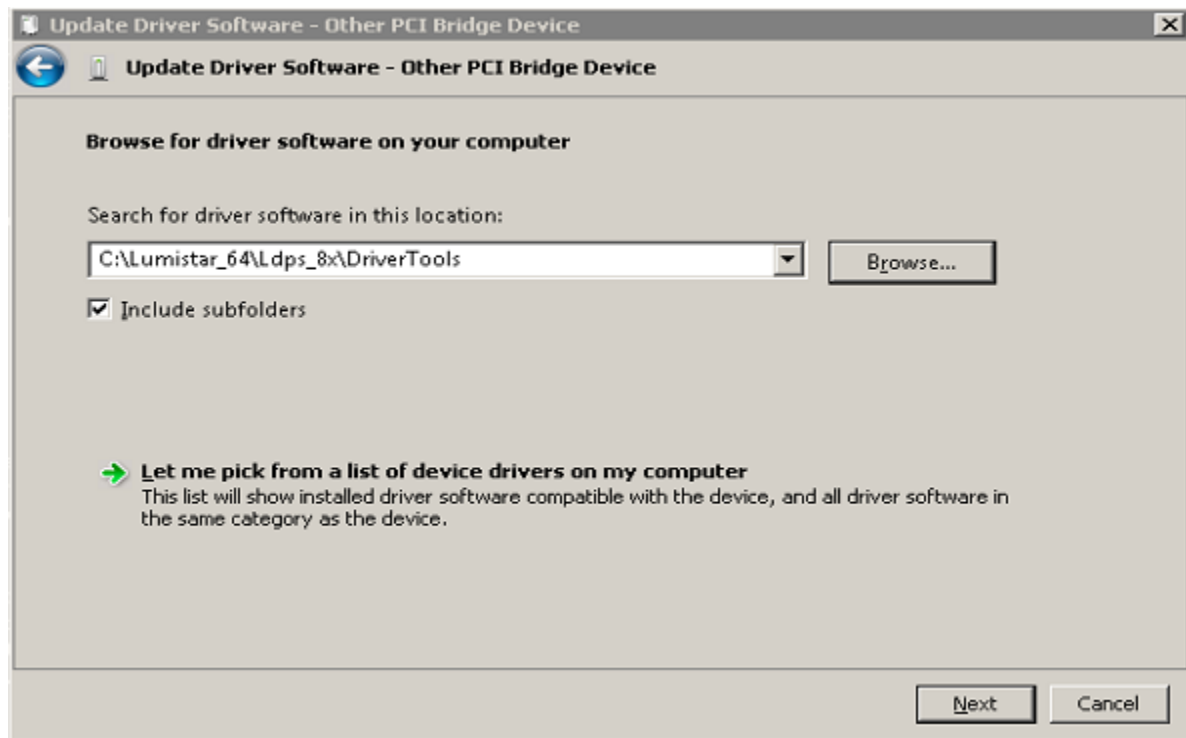
Click the **Browse my computer for driver software**.



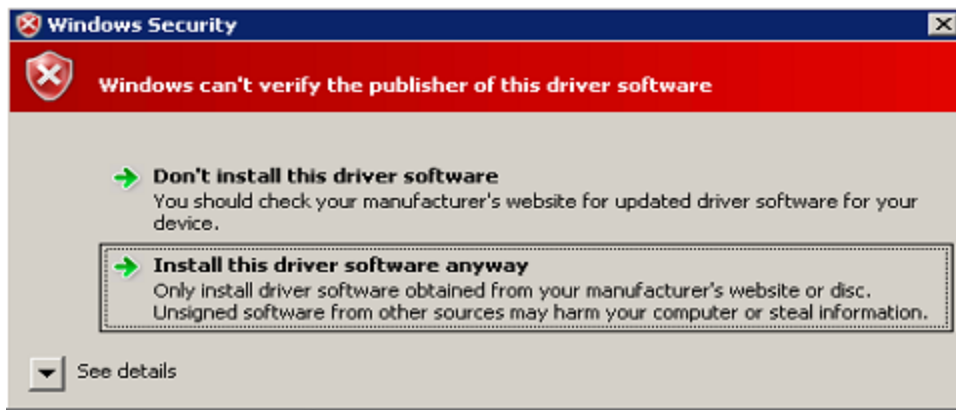
Click the **Browse** Button and steer to **C:\Lumistar\_64\LDPS\_8x\DriverTools**



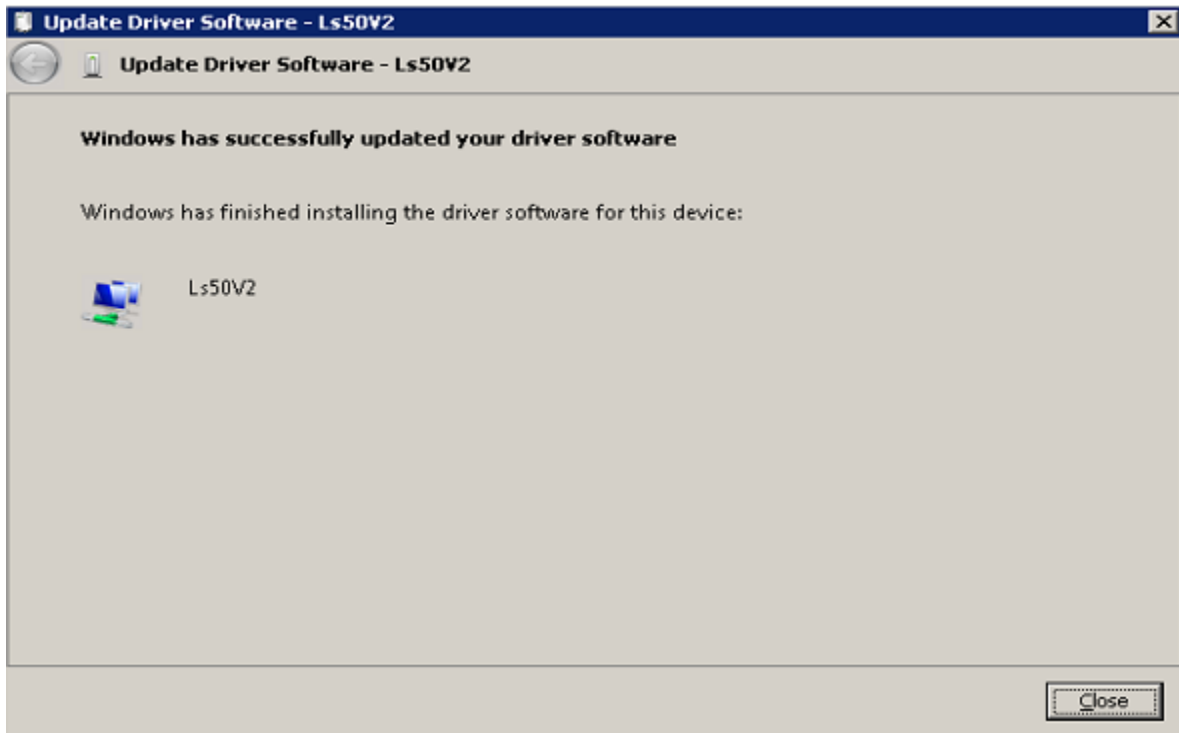
Click **OK**



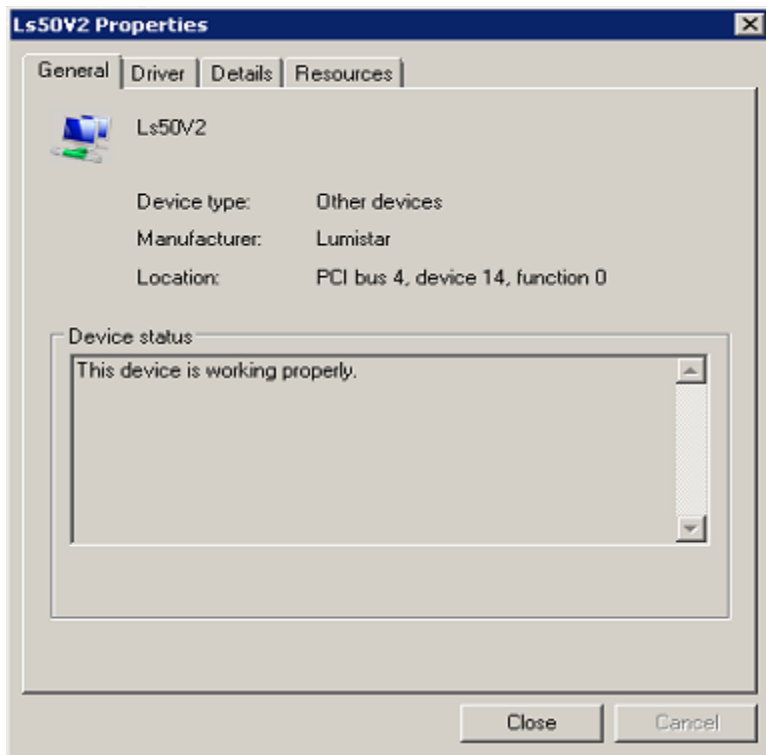
Click **Next**



Click **Install this driver software**

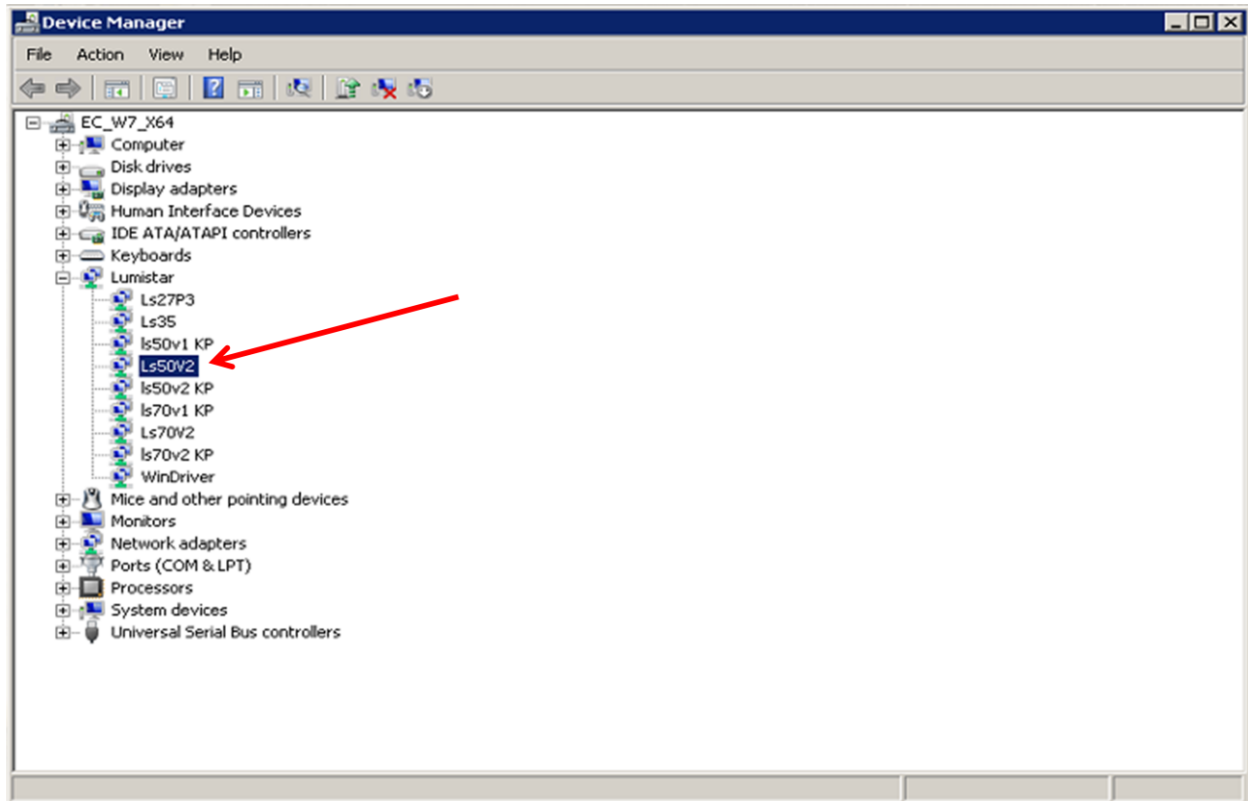


The driver is identified and used, Click **Close**.



Click the **Close** Button.

The **Ls50P2** is now detected:



Repeat for each remaining **Other PCI Bridge Device**.